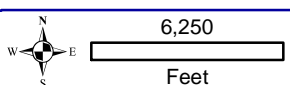


Long Lake Phase - Fieldwork Completed in 2009

Long Lake	604 acres
Phase I - Fieldwork Completed in 2010	
Virgin Lake	261 acres
Whitefish Lake	199 acres
The Thoroughfare	198 acres
Big Lake	845 acres
Phase II - Fieldwork Completed in 2011	
Laurel Lake	249 acres
Big Stone Lake	607 acres
Dog Lake	202 acres
Crystal Lake	116 acres
Deer Lake	188 acres
Phase III - Fieldwork Completed in 2012	
Fourmile Lake	210 acres
Big Fork Lake	663 acres
Phase IV - Fieldwork Completed in 2013	
Moccasin Lake	95 acres
Spirit Lake	368 acres
Maple Lake	131 acres
Phase V - Fieldwork Completed in 2014	
Little Fork Lake	336 acres
Medicine Lake	396 acres
Phase VI - Fieldwork Completed in 2015	
Round Lake	151 acres
Island Lake	305 acres
Townline Creek	14 acres
Townline Lake	142 acres
Phase VII - Fieldwork Completed in 2016	
Planting Ground Lake	1,011 acres
Range Line Lake	129 acres
Phase VIII - Fieldwork Completed in 2017	
Long Lake	604 acres



Onterra LLC
 Lake Management Planning
 815 Prosper Road
 De Pere, WI 54115
 920.338.8860
 www.onterra-eco.com

Sources:
 Roads & Hydro: WDNR
 Map Date: December 7, 2012
 Filename: Map1_3Lakes_Location.mxd

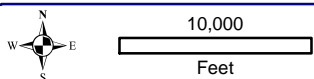
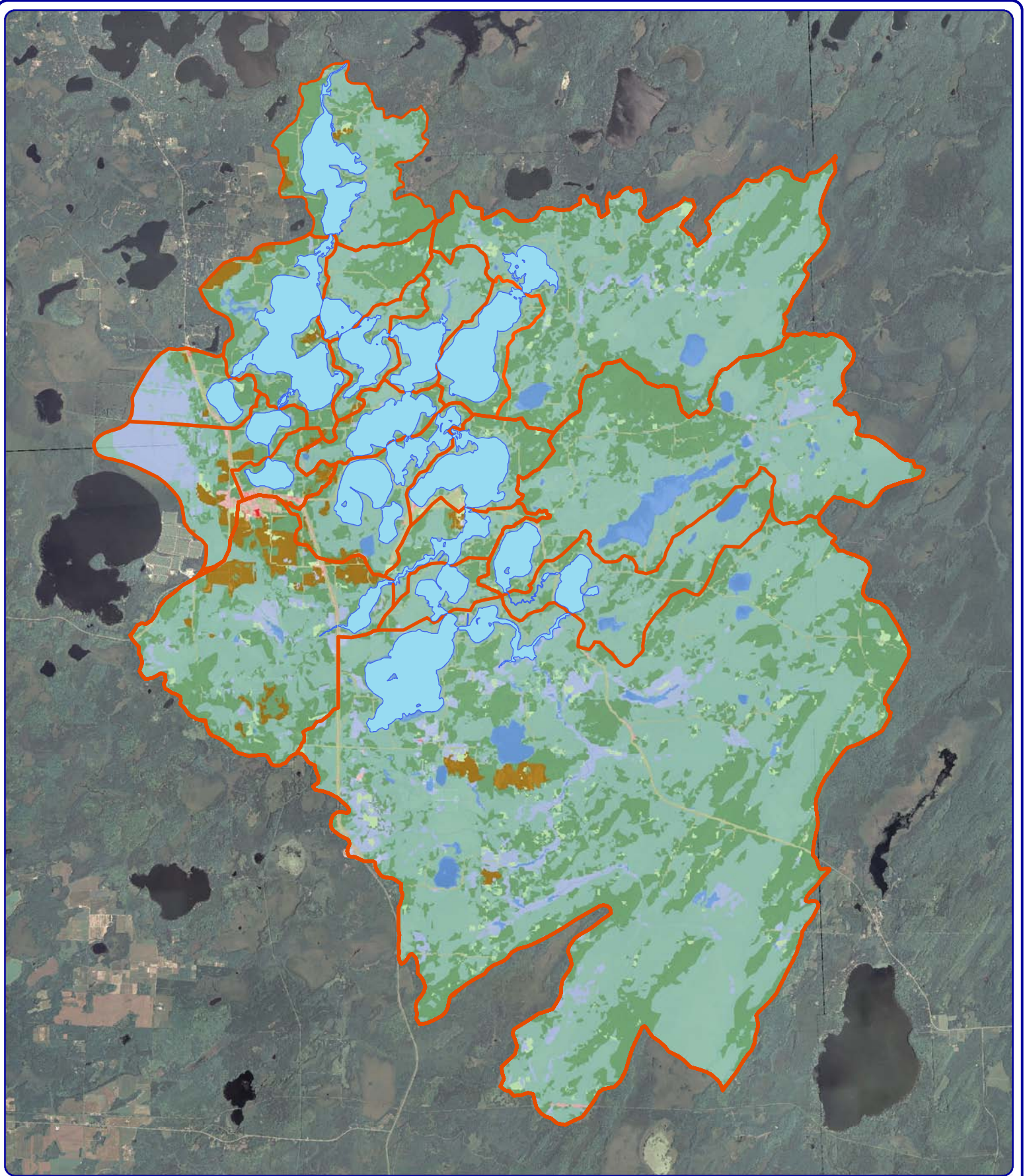


Extent of large map shown in red.

Legend

- Public Access - Watercraft Landing
- Public Access - Carry-in
- Water Quality Sampling Location
- Burnt Rollway Dam

Map 1
Three Lakes Chain
 Oneida County, Wisconsin
Project Boundaries
and Water Quality
Sampling Locations



Onterra LLC
 Lake Management Planning
 815 Prosper Road
 De Pere, WI 54115
 920.338.8860
 www.onterra-eco.com

Source:
 Watershed: WDNR & Onterra
 Landcover: WISCLAND
 Roads & Hydro: WDNR
 Orthophotography: NAIP, 2010
 Map Date: March 7, 2011
 File Name: Map2_3Lakes_WS.mxd



Extent of large map shown in red.

- Legend**
- Project Lake
 - Watershed Boundary
- Land Cover Types**
- Forest
 - Forested Wetlands
 - Pasture/Grass
 - Open Water
 - Wetland
 - Row Crop Agriculture
 - Rural Open Space
 - Rural Residential
 - Urban - High Density
 - Urban - Medium Density

Map 2
 Three Lakes Chain
 Oneida County, Wisconsin
**Watershed and
 Land Cover Types**