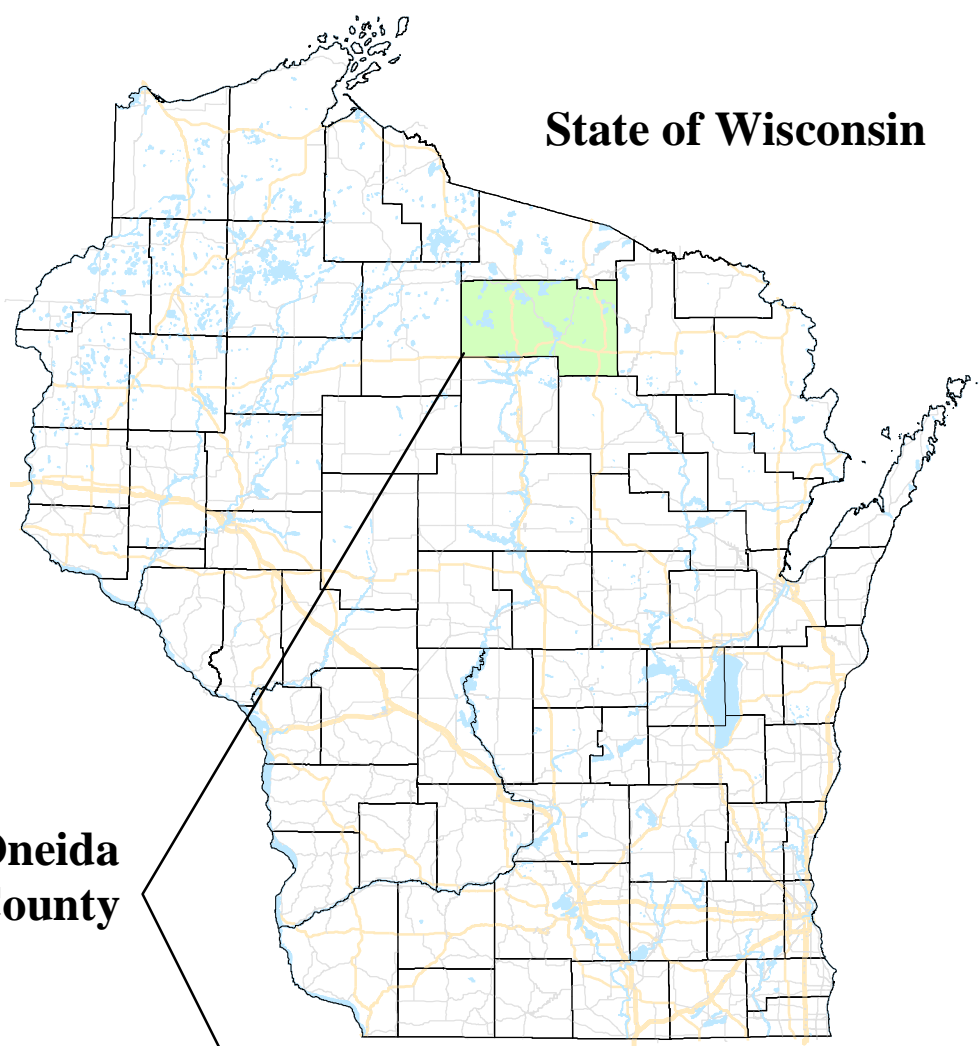




State of Wisconsin

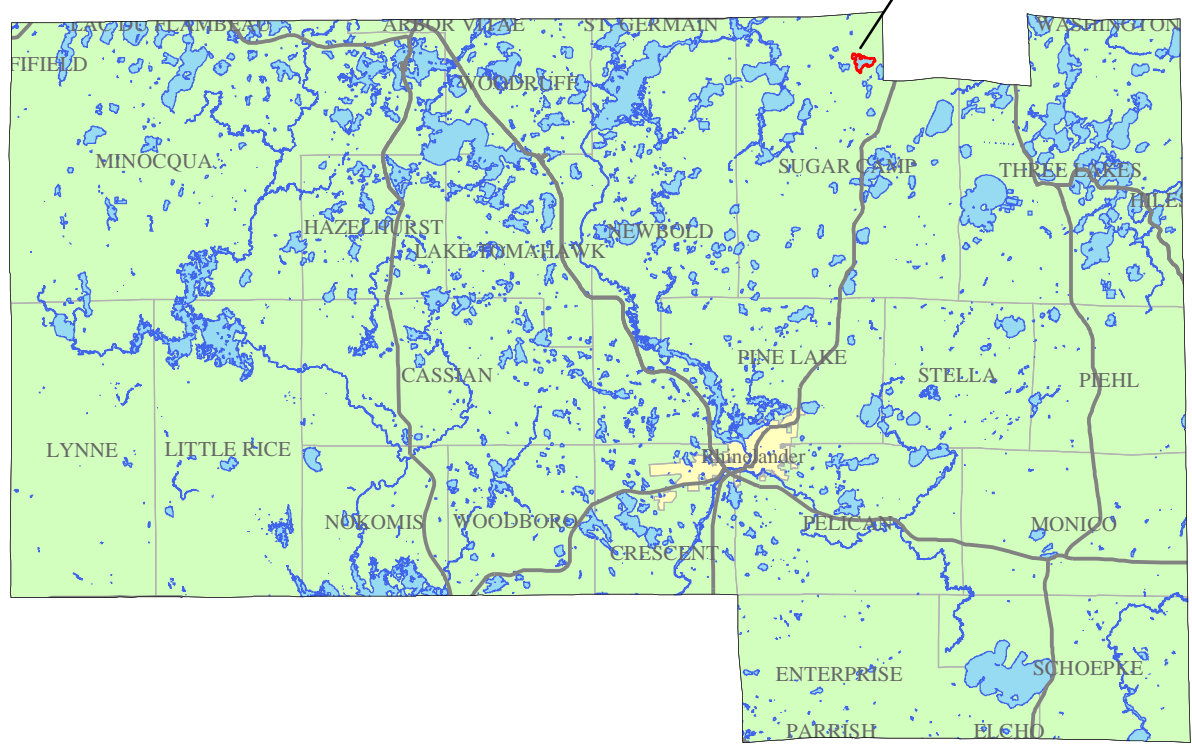


Oneida County

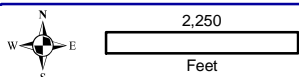
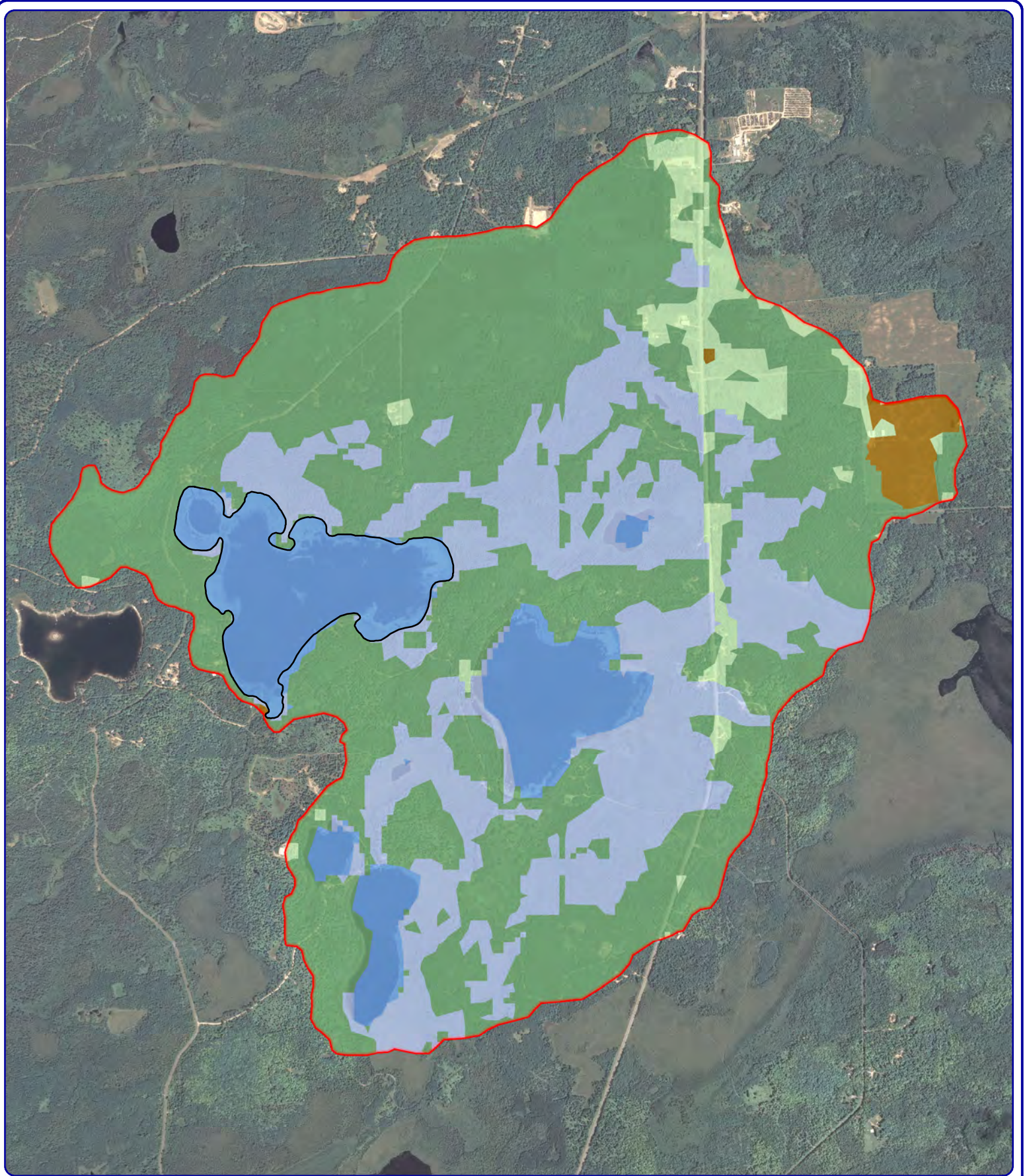
Kathan Lake



⊕ Water Quality Sampling Location

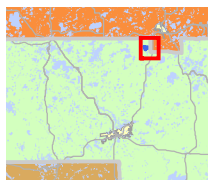


Map 1
Kathan Lake
Oneida County
Project Location &
Water Quality
Sampling Site



Onterra LLC
 Lake Management Planning
 815 Prosper Road
 De Pere, WI 54115
 920.338.8860
 www.onterra-eco.com

Sources:
 Watershed: WDNR and Onterra
 Landcover: WISCLAND
 Roads and Hydro: WDNR
 Orthophotography: NAIP, 2005
 Map Date: March 22, 2010



Extent of large map shown in red.

Legend

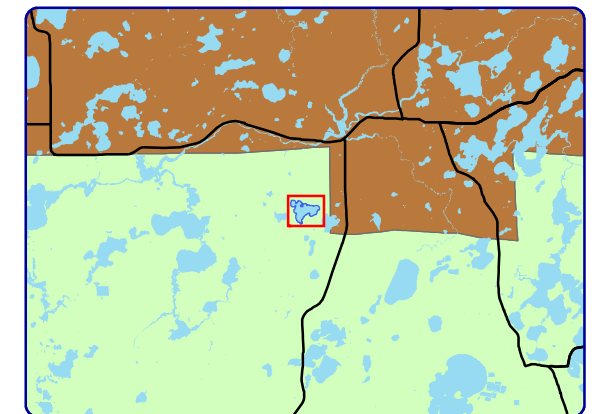
- Land Cover Types**
- Row Crop Agriculture
 - Pasture/Grass
 - Forest
 - Open Water
 - Wetland

- Watershed Boundary
- Kathan Lake

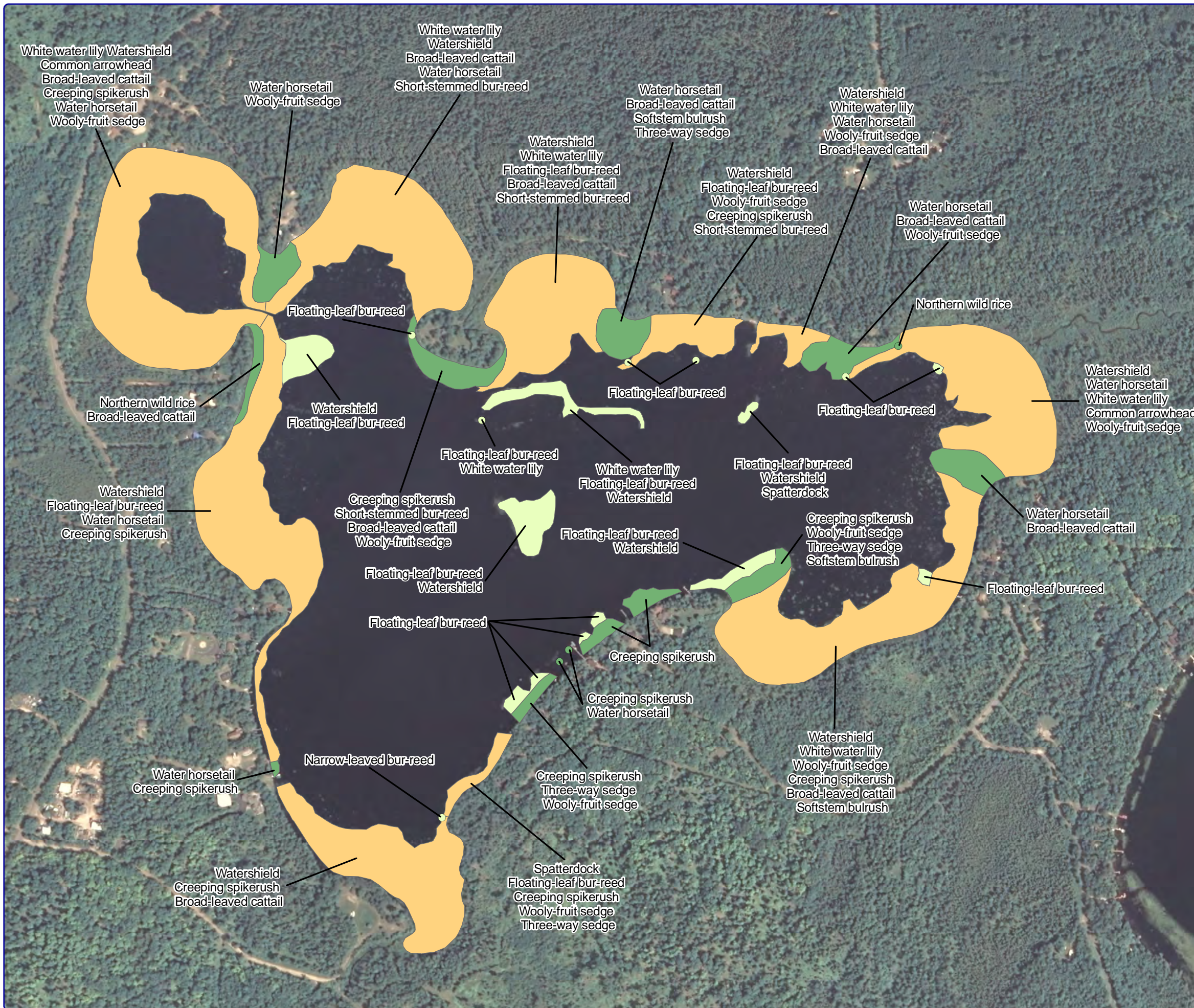
Map 2
Kathan Lake
 Oneida County, Wisconsin
**Watershed and
 Land Cover Types**

Map 3 Kathan Lake Oneida County, Wisconsin

Aquatic Plant Communities



Extent of large map shown in red.



Legend

Small Plant Communities

- Emergent
- Floating-leaf
- Mixed floating-leaf & emergent

Large Plant Communities

- Emergent
- Floating-leaf
- Mixed floating-leaf & emergent

Sources:

Roads & Hydro: WDNR
 Orthophotography: NAIP 2005
 Aquatic Plant Survey: Onterra, 2008

Map Date: April 6, 2009

File Name: Kathan_2008_Comm.mxd

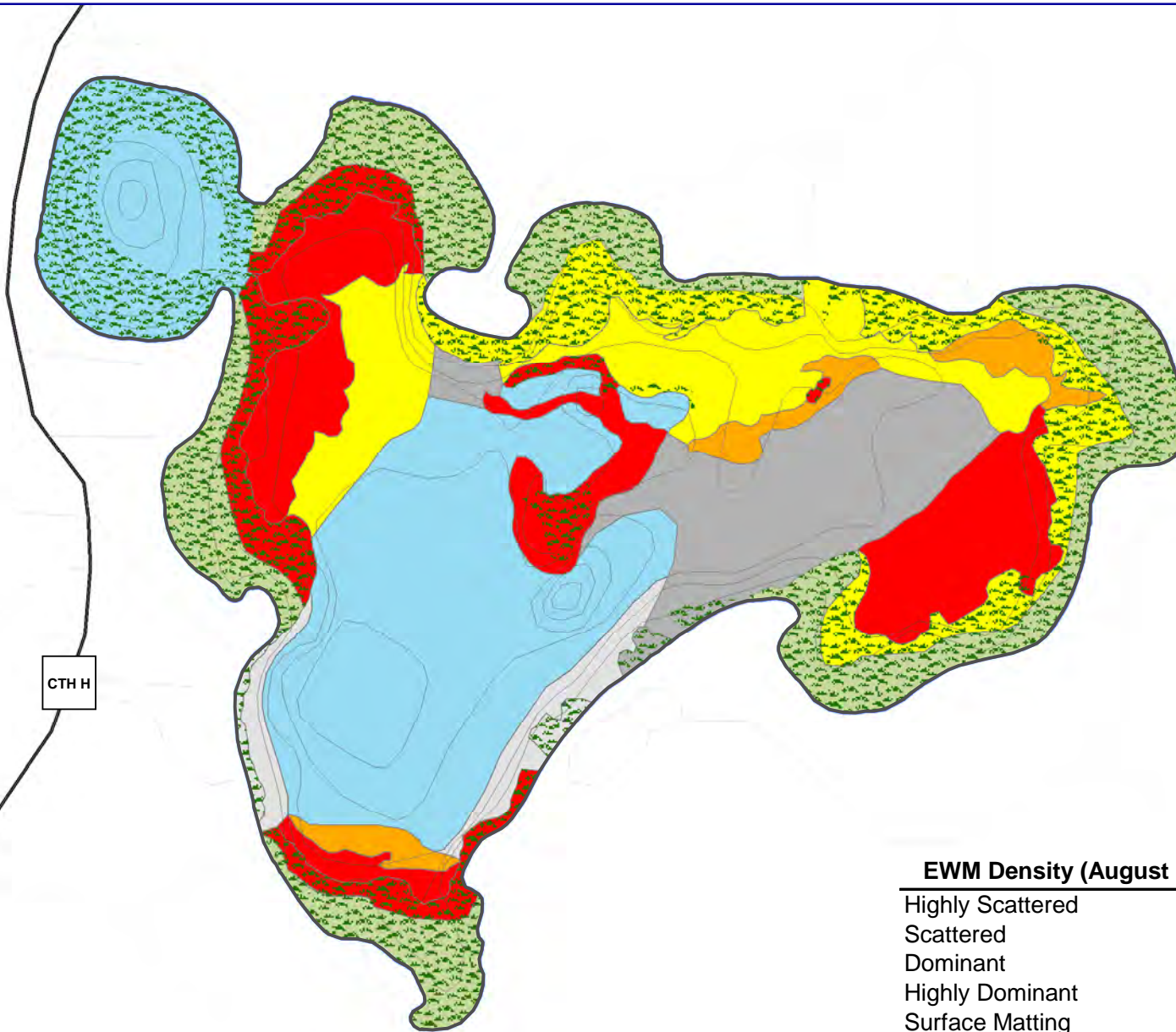


500

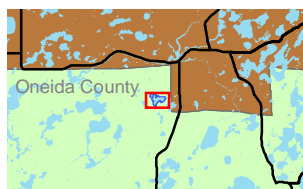
Feet

Onterra, LLC
 Lake Management Planning

815 Prosper Road
 De Pere, WI 54115
 920.338.8860
 www.onterra-eco.com



EWM Density (August 2008)	Acres
Highly Scattered	6.9
Scattered	22.8
Dominant	36.9
Highly Dominant	6.2
Surface Matting	38.8
Total	111.6



Extent of large map shown in red.

Onterra LLC
 Lake Management Planning
 815 Prosper Road
 De Pere, WI 54115
 920.338.8860
 www.onterra-eco.com

Sources:
 Roads & Hydro: WDNR
 Aquatic Plants: Onterra, 2008
 Bathymetry: WDNR
 Map date: April 2, 2009
 File Name: Kathan_EWM_PkBio_0808.mxd

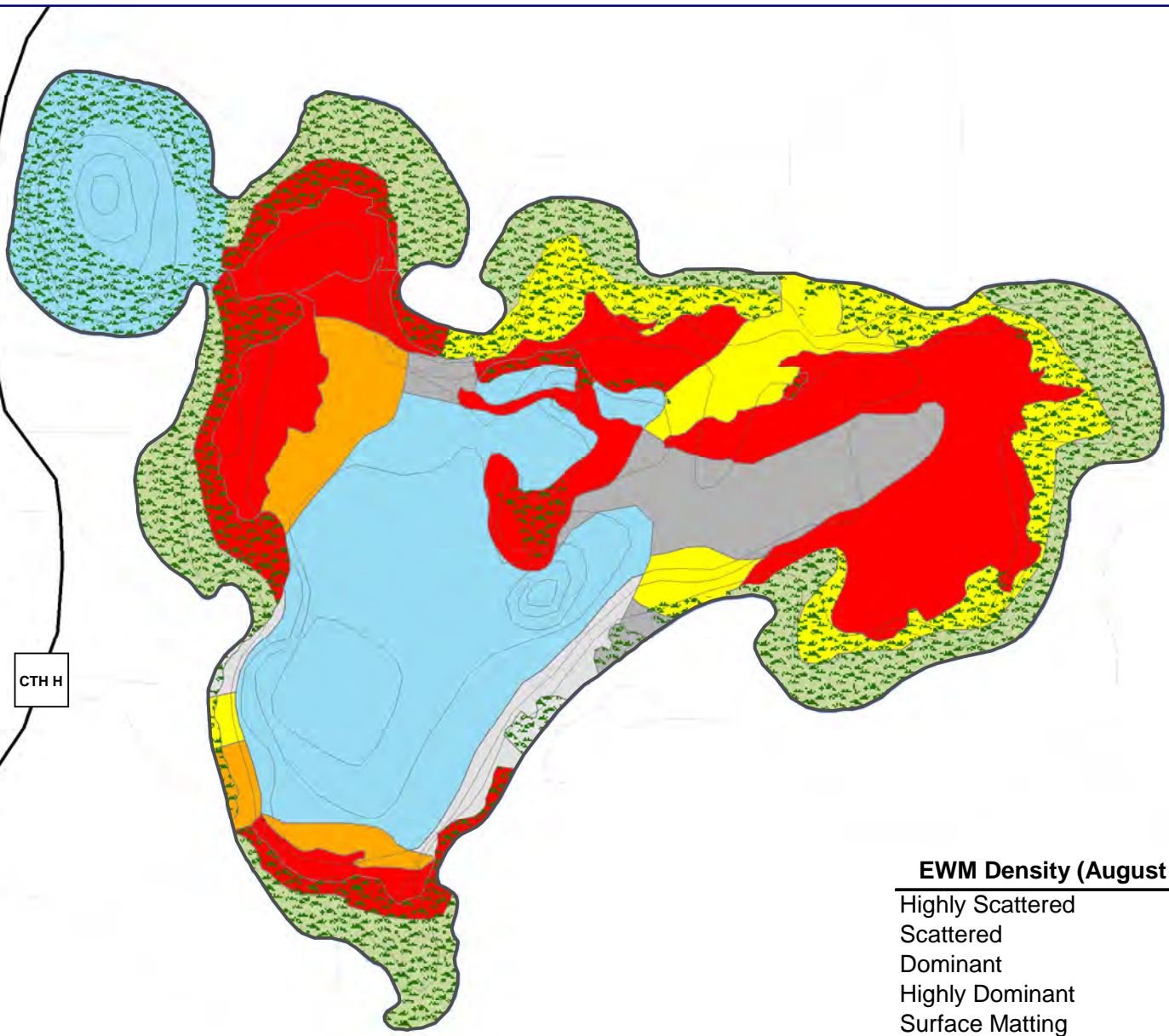
Legend
 Eurasian Water Milfoil (August 2008)

- Highly Scattered
- Scattered
- Dominant
- Highly Dominant
- Surface Matting

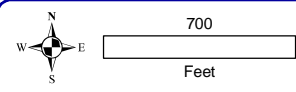
Native Floating-leaf and/or Emergent Plant Community

Unreachable Area, EWM Density Undetermined (~36.9 acres)

Map 4
Kathan Lake
 Oneida County, Wisconsin
2008 EWM
Survey Results

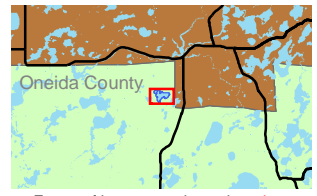


EWM Density (August 2009)	Acres
Highly Scattered	5.1
Scattered	14.2
Dominant	24.4
Highly Dominant	8.7
Surface Matting	59.2
Total	111.6



Onterra LLC
 Lake Management Planning
 815 Prosper Road
 De Pere, WI 54115
 920.338.8860
 www.onterra-eco.com

Sources:
 Roads & Hydro: WDNR
 Aquatic Plants: Onterra, 2009
 Bathymetry: WDNR
 Map date: October 28, 2009
 File Name: MapX_Kathan_EWM_PB_Aug09.mxd

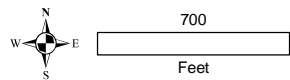
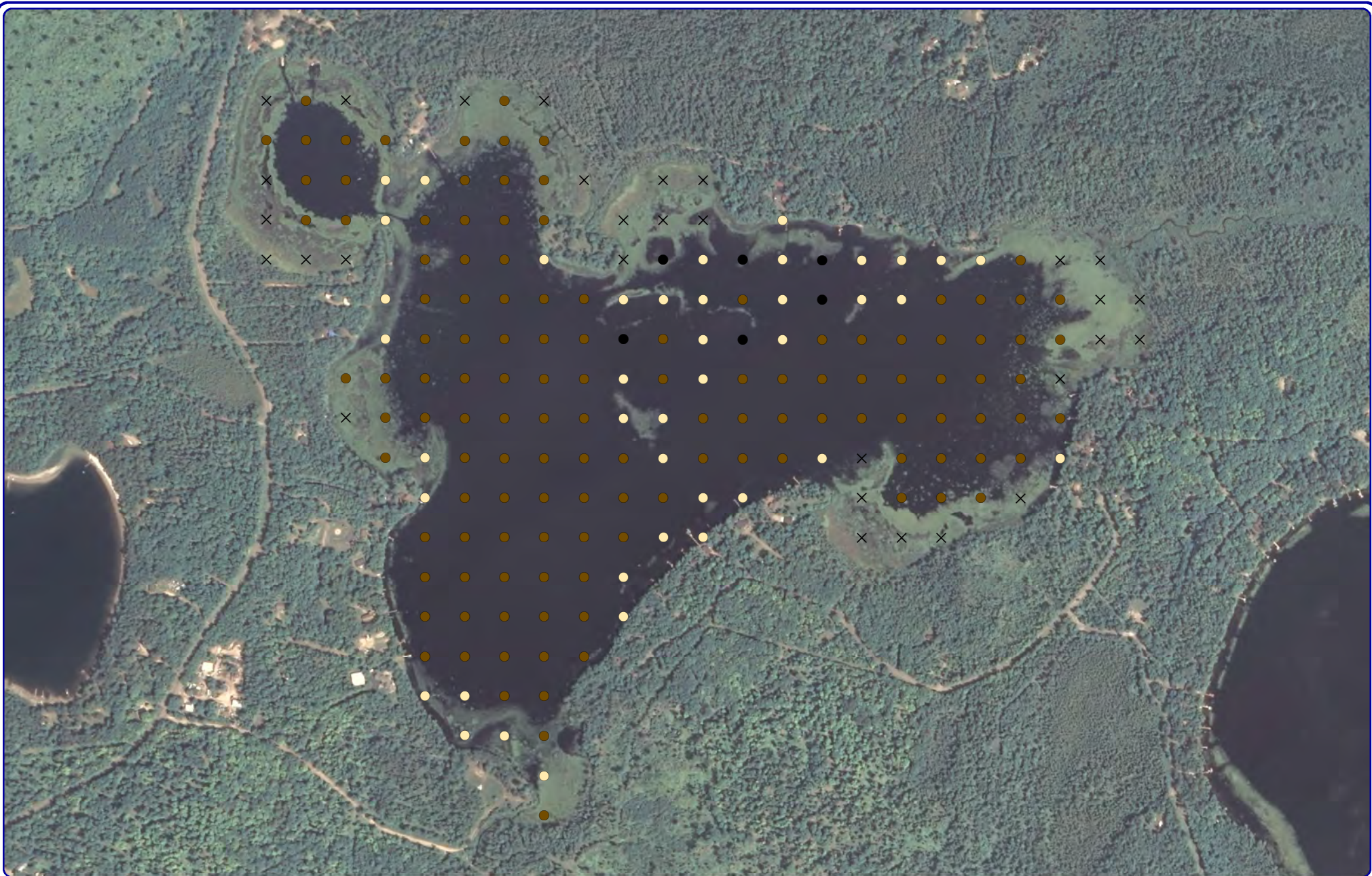


Extent of large map shown in red.

Legend
 Eurasian Water Milfoil (August 2009)

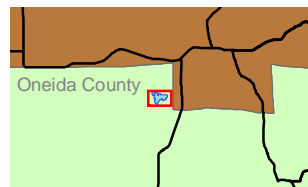
- Highly Scattered
- Scattered
- Dominant
- Highly Dominant
- Surface Matting
- Native Floating-leaf and/or Emergent Plant Community
- Unreachable Area, EWM Density Undetermined (~36.9 acres)

Map 5
Kathan Lake
 Oneida County, Wisconsin
2009 EWM
Survey Results



Onterra LLC
 Lake Management Planning
 815 Prosper Road
 De Pere, WI 54115
 920.338.8860
 www.onterra-eco.com

Sources:
 Roads & Hydro: WDNR
 Aquatic Plant Survey: WDNR, 2009
 Orthophotography: NAIP, 2005
Map date: March 22, 2010



Extent of large map shown in red.

Legend

- Sand
- Muck
- Rock
- × Sediment Type not Recorded

Map 6
Kathan Lake
 Oneida County, Wisconsin
Point-Intersept Survey:
Substrate Type

