

1,000



Feet






Onterra LLC
 Lake Management Planning
 815 Propser Road
 De Pere, WI 54115
 920.338.8860
 www.onterra-eco.com

Sources:
 Roads & Hydro: WDNR
 Map date: January 4, 2012
 Filename: Map1_George_Location.mxd



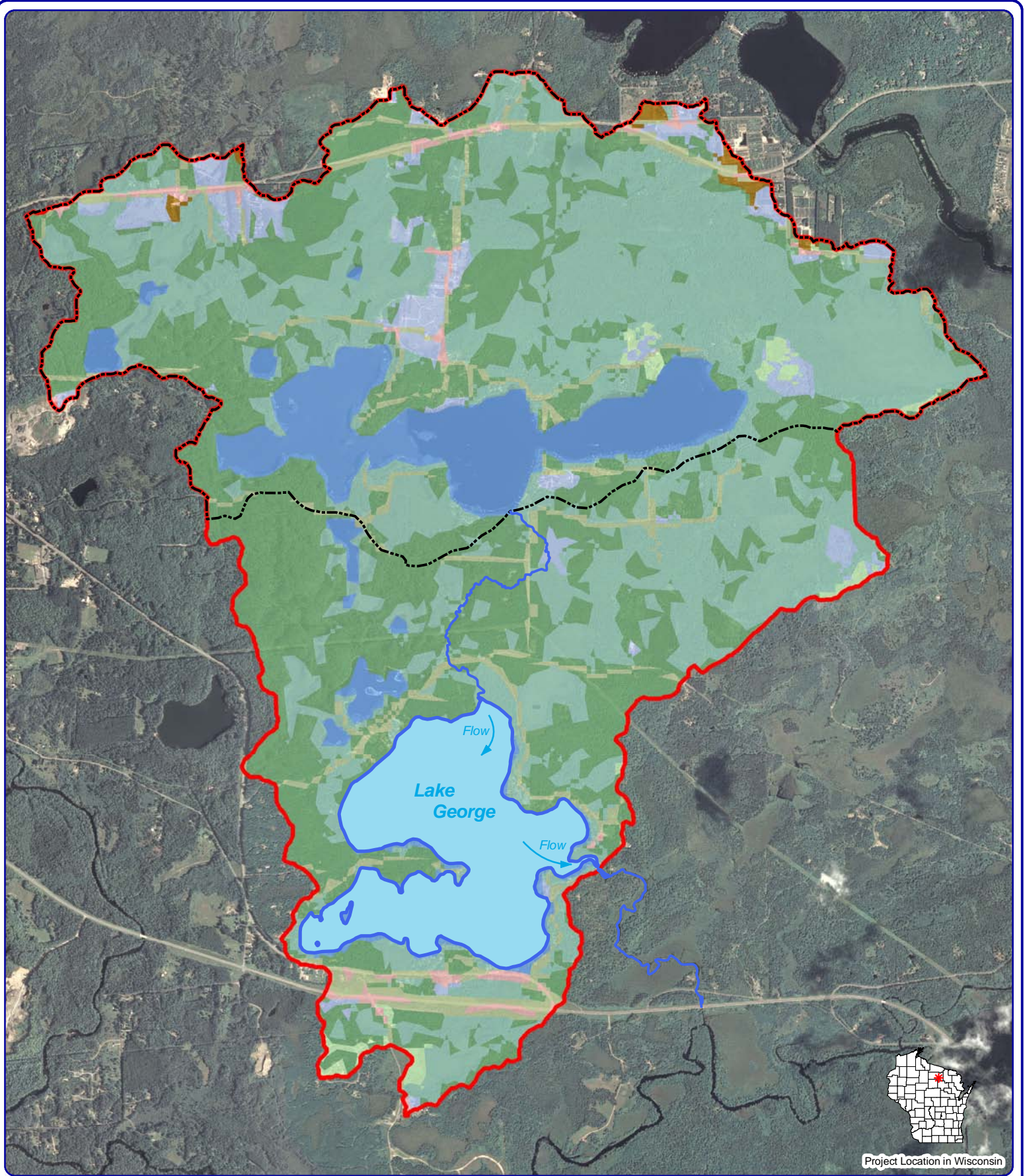
Project Location in Wisconsin

Legend

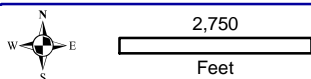
-  Lake George ~ 435 acres
WDNR Definition
-  Point-Intercept Survey Location
51-meter spacing, 699 total points
-  Water Quality Sampling Location
-  Public Access - Boat Landing
-  Public Access - Public Beach

Map 1

Lake George
 Oneida County, Wisconsin
**Project Location
 & Lake Boundaries**



Project Location in Wisconsin



Onterra LLC
 Lake Management Planning
 815 Prosper Road
 De Pere, WI 54115
 920.338.8860
 www.onterra-eco.com

Source:
 Watershed: WDNR & Onterra
 Landcover: NLCD 2006
 Hydro: WDNR
 Orthophotography: NAIP, 2010
 Map Date: February 2, 2013
 File Name: Map2_George_WS.mxd

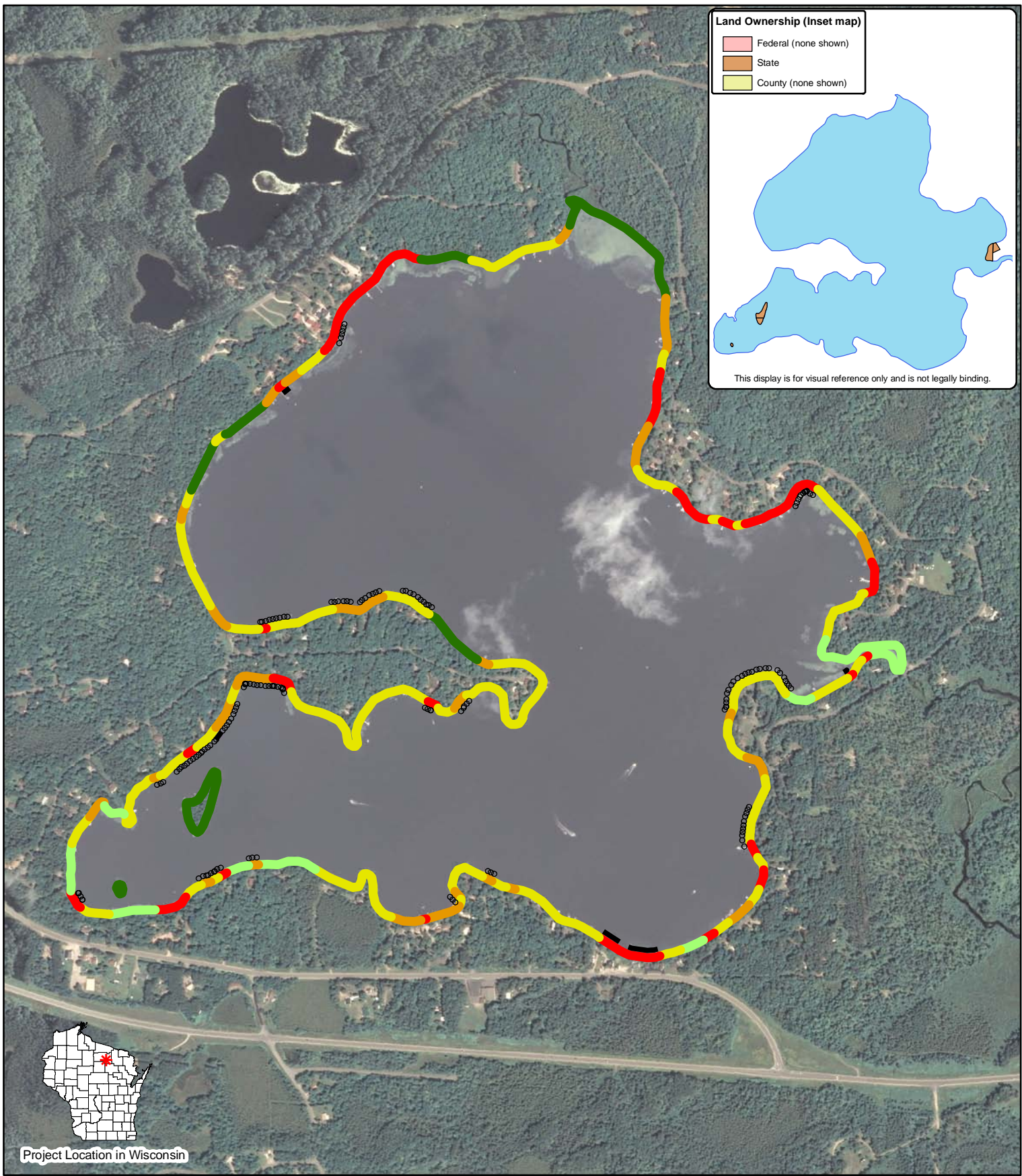
Legend

- Watersheds**
- Lake Thompson Sub-watershed
 - Lake George Watershed

- Forest
- Forested Wetlands
- Pasture/Grass
- Open Water
- Wetland

- Land Cover Types**
- Row Crop Agriculture
 - Rural Open Space
 - Rural Residential
 - Urban - High Density
 - Urban - Medium Density

Map 2
 Lake George
 Oneida County, Wisconsin
**Watershed and
 Land Cover Types**

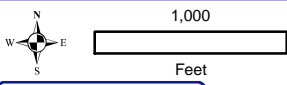


Land Ownership (Inset map)

- Federal (none shown)
- State
- County (none shown)



Project Location in Wisconsin



Onterra LLC
 Lake Management Planning
 815 Prosper Rd
 De Pere, WI 54115
 920.338.8860
 www.onterra-eco.com

Sources:
 Orthophotography: NAIP, 2010
 Shoreline Assessment: Onterra, 2012
 State Land: WDNR
 Map date: January 3, 2013
 Filename: Map3_George_ShorelineCondition_2012.mxd

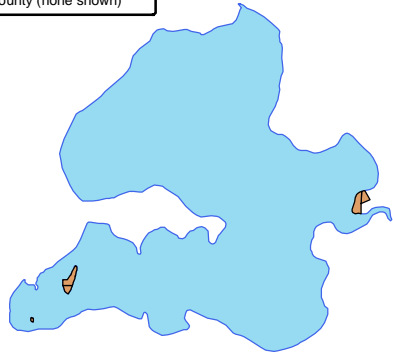
Legend

- Natural/Undeveloped
- Developed-Natural
- Developed-Semi-Natural
- Developed-Unnatural
- Urbanized
- Seawall
- Wood Seawall
- Rip-Rap

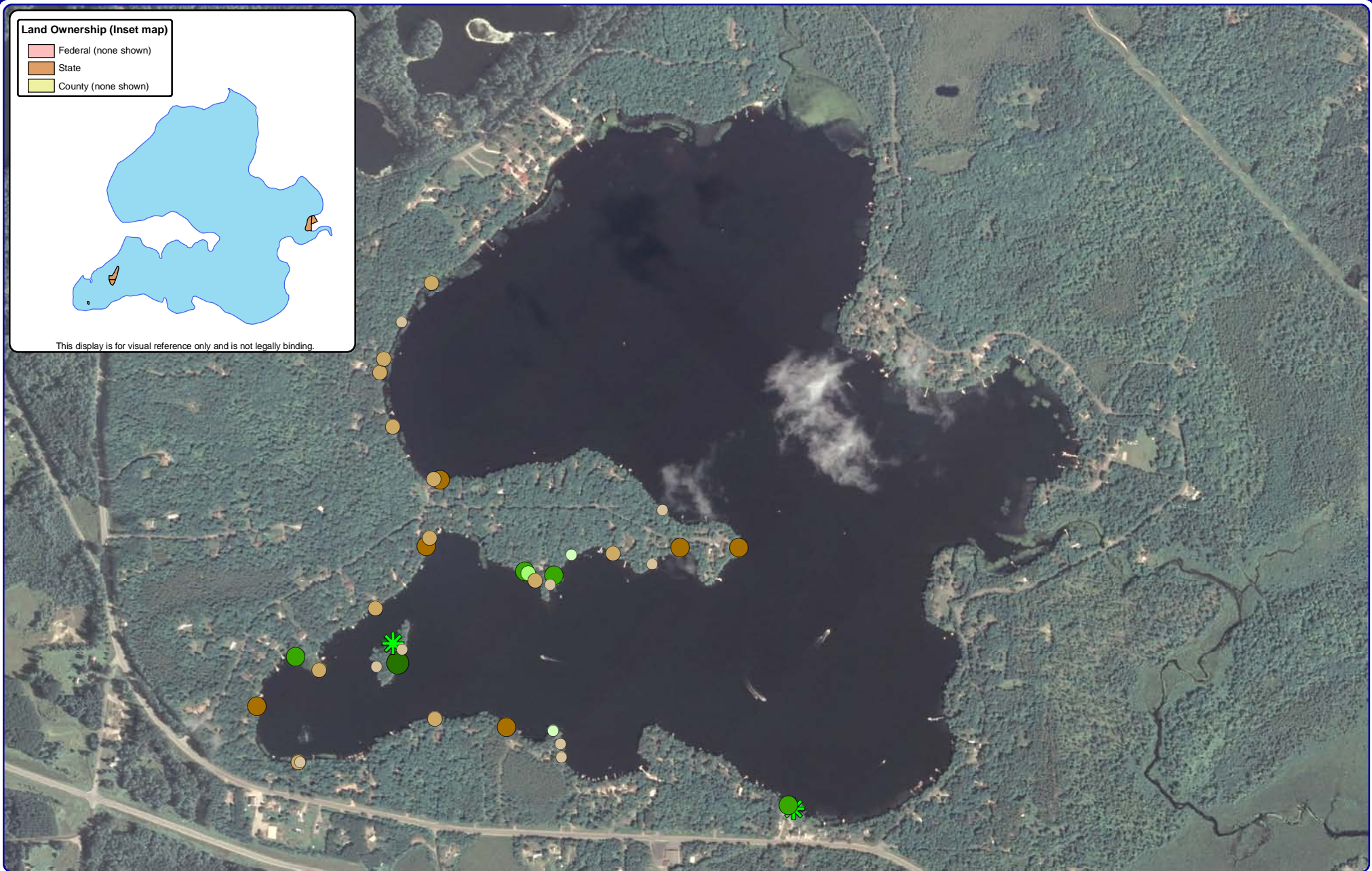
Map 3
Lake George
 Oneida County, Wisconsin
Shoreland
Condition

Land Ownership (Inset map)

- Federal (none shown)
- State
- County (none shown)



This display is for visual reference only and is not legally binding.

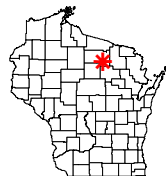


1,000

Feet

Onterra LLC
Lake Management Planning
815 Prosper Rd
De Pere, WI 54115
920.338.8860
www.onterra-eco.com

Sources:
Orthophotography: NAIP, 2010
CWH Survey: Onterra, 2012
State Land: WDNR
Map date: January 8, 2013
Filename: Map4_George_CWH_2012.mxd

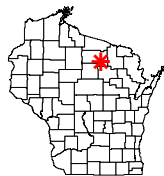
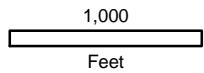
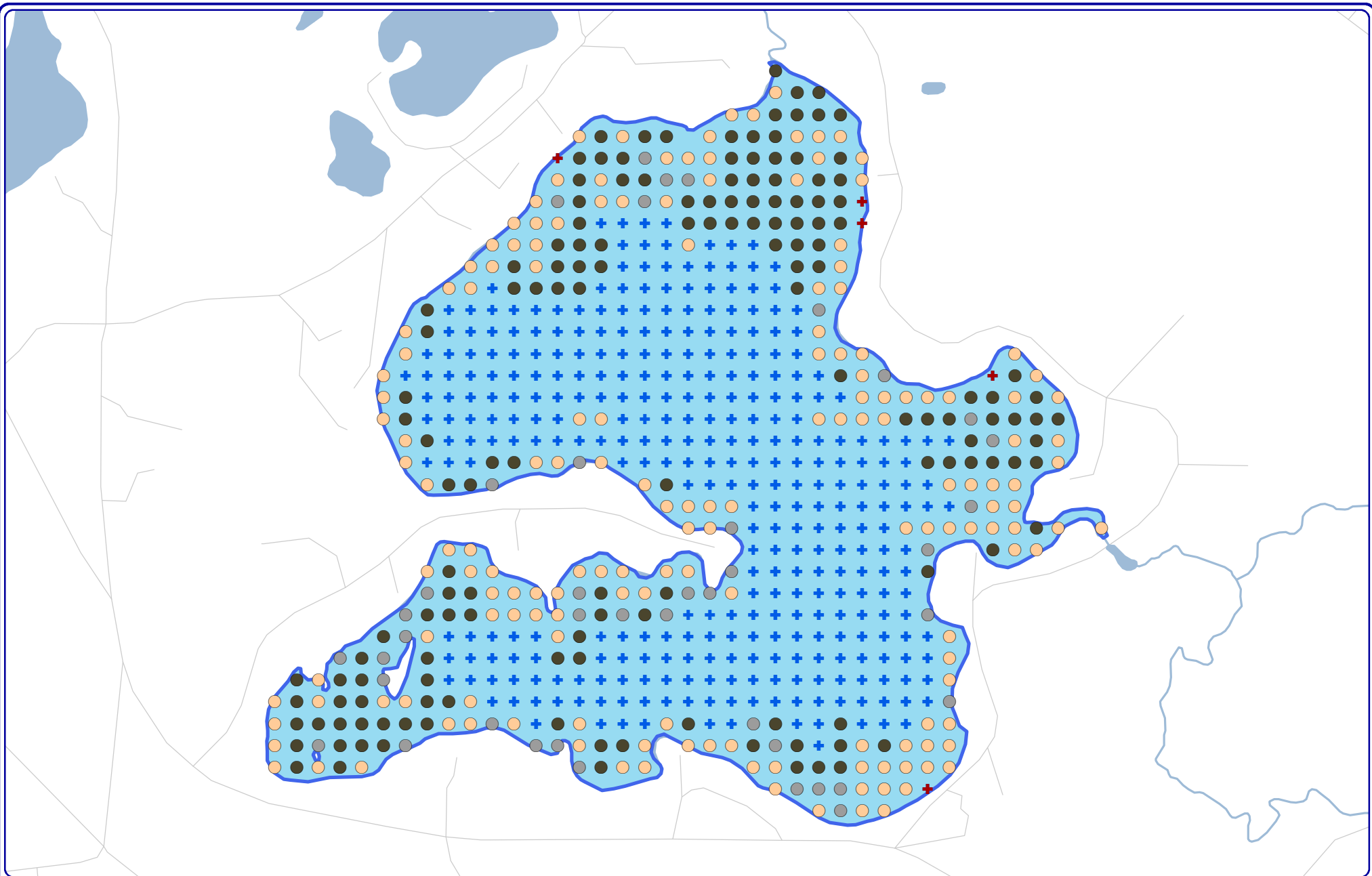


Project Location in Wisconsin

Legend

- 2-8 Inches, No Branches
- 2-8 Inches, Minimal Branches
- 2-8 Inches, Moderate Branches
- 2-8 Inches, Full Canopy (none)
- >8 Inches, No Branches
- >8 Inches, Minimal Branches
- >8 Inches, Moderate Branches
- >8 Inches, Full Canopy
- Cluster

Map 4
Lake George
Oneida County, Wisconsin
Coarse Woody
Habitat



Project Location in Wisconsin

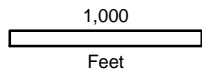
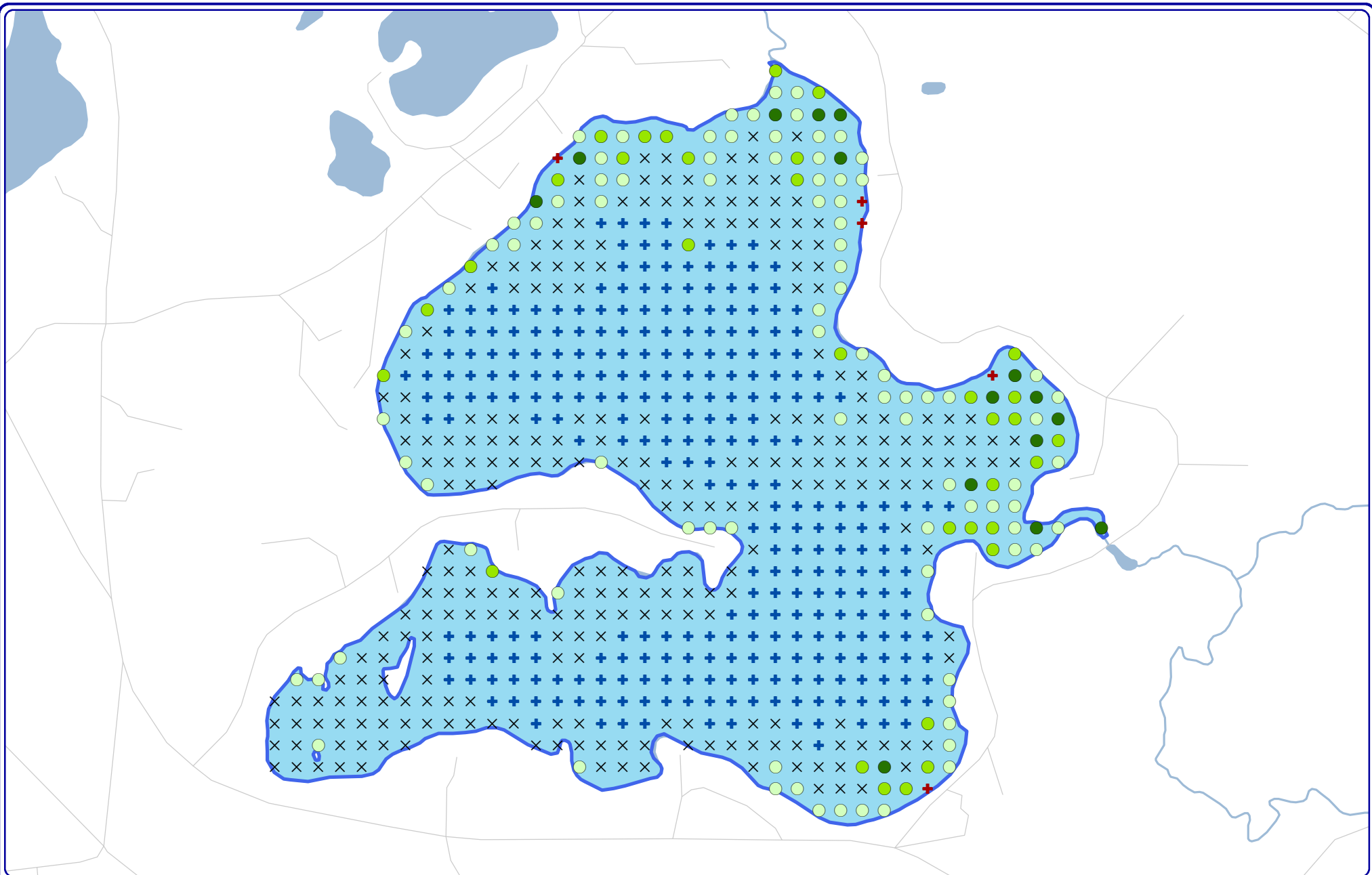
Onterra LLC
 Lake Management Planning
 815 Prosper Road
 De Pere, WI 54115
 920.338.8860
 www.onterra-eco.com

Sources:
 Roads and Hydro: WDNR
 PI Survey: Onterra, 2012
 Map Date: February 5, 2013
 Filename: Map5_George_SubstratePI.mxd

Legend

- Muck
- Rock
- Sand
- + Too Deep, No Data
- + Non-navigable, No Data

Map 5
 Lake George
 Oneida County, Wisconsin
**2012 Point-intercept Survey:
 Substrate Types**



Onterra LLC
 Lake Management Planning
 815 Prosper Road
 De Pere, WI 54115
 920.338.8860
 www.onterra-eco.com

Sources:
 Roads and Hydro: WDNR
 PI Survey: Onterra, 2012
 Map Date: February 5, 2013
 Filename: Map6_George_TRF.mxd



Project Location in Wisconsin

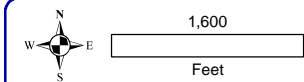
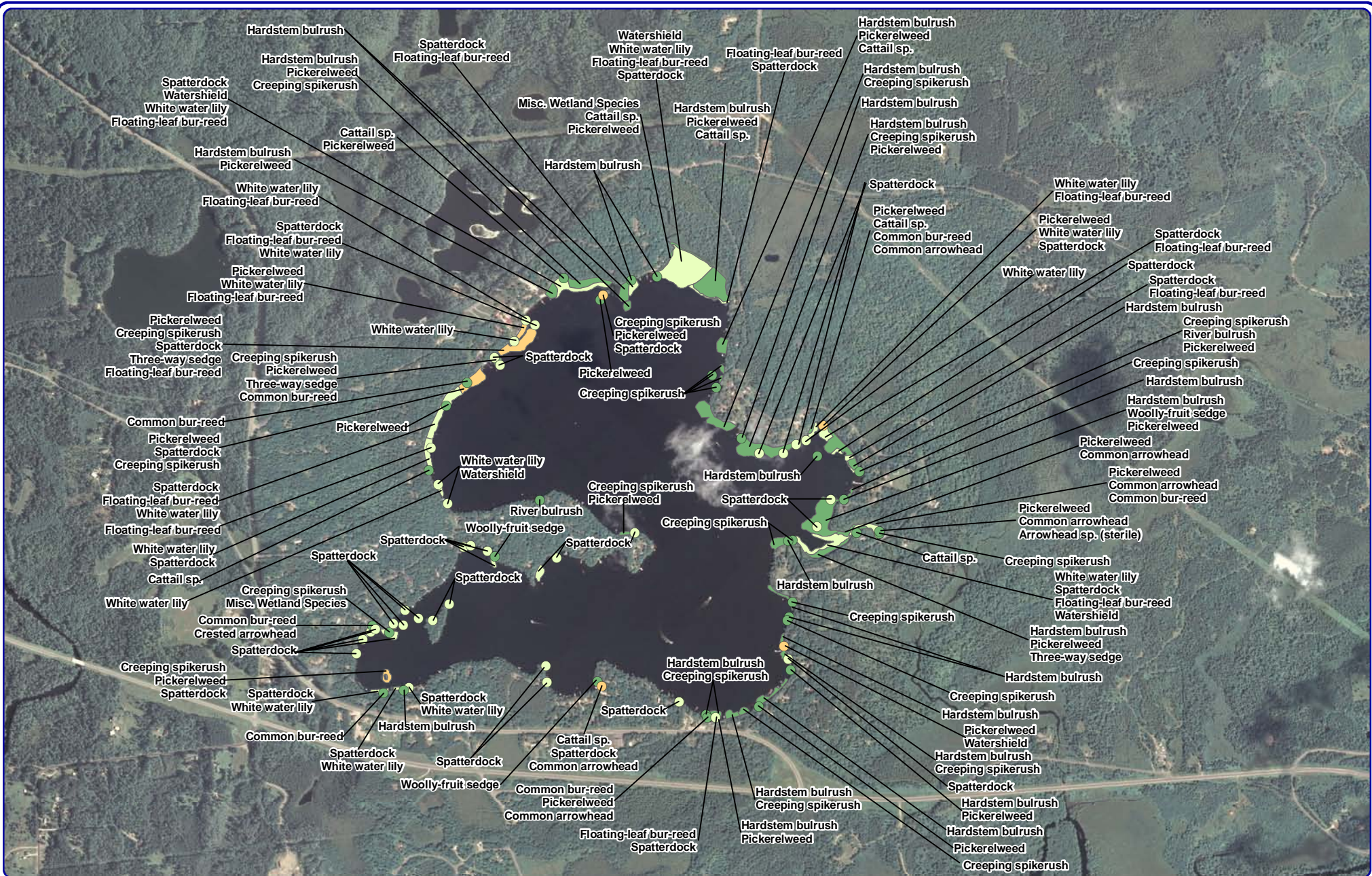
Legend

- Total Rake-fullness = 1
- Total Rake-fullness = 2
- Total Rake-fullness = 3
- × No Vegetation
- + Too Deep
- + Non-navigable, No Data

Map 6

Lake George
 Oneida County, Wisconsin

**2012 Point-intercept Survey:
 Aquatic Vegetation Distribution**



Onterra LLC
 Lake Management Planning
 815 Prosper Road
 De Pere, WI 54115
 920.338.8860
 www.onterra-eco.com

Sources:
 Aquatic Plants: Onterra, 2012
 Orthophotography: NAIP, 2010
 Map date: November 27, 2012
 Filename: Map7_George_Conm_2012.mxd



Project Location in Wisconsin

Legend

Small Plant Communities

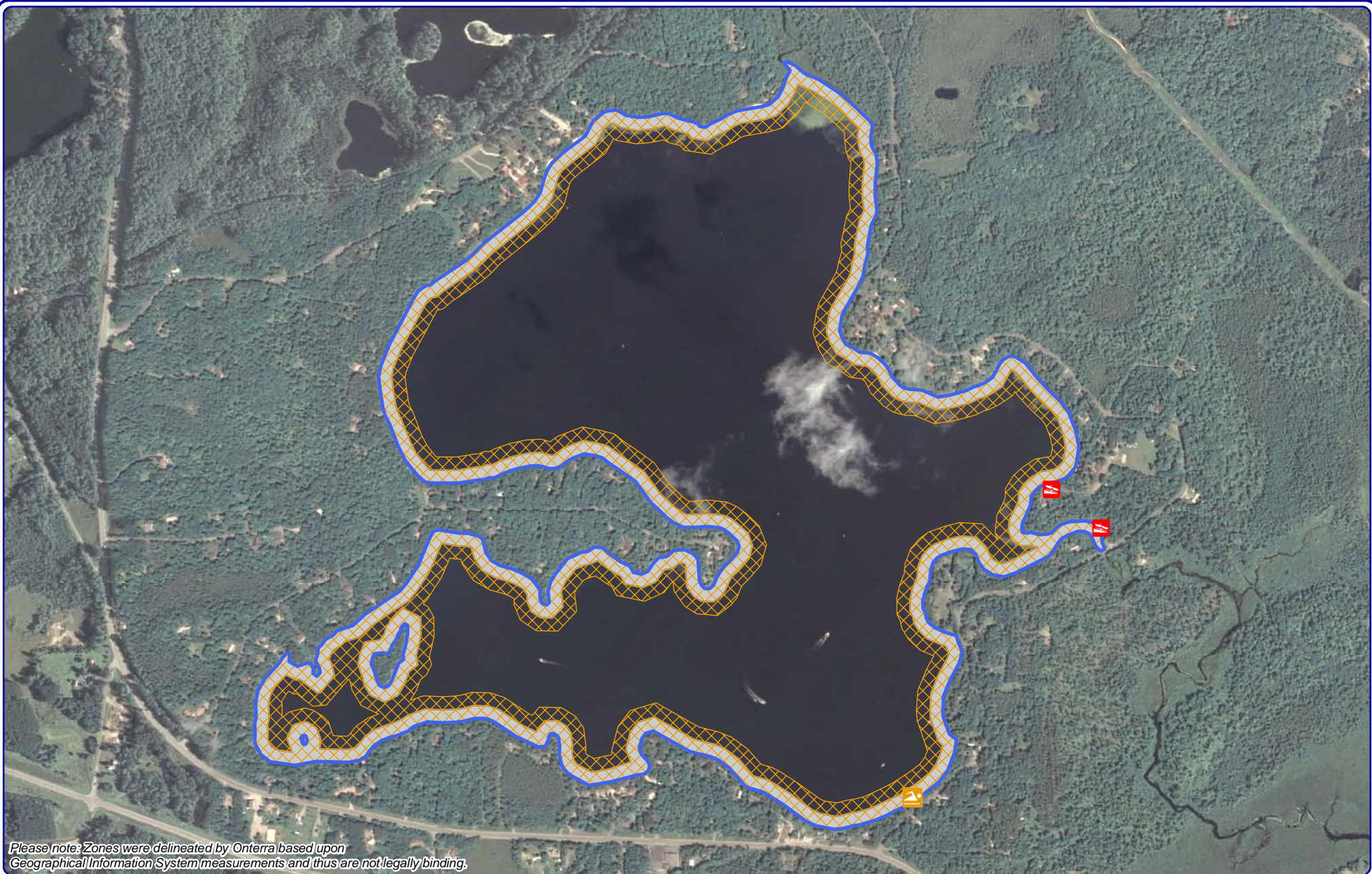
- Emergent
- Floating-leaf
- Mixed Floating-leaf & Emergent

Large Plant Communities

- Emergent
- Floating-leaf
- Mixed Floating-leaf & Emergent

Map 7

Lake George
 Oneida County, Wisconsin
**Aquatic Plant
 Communities**



Please note: Zones were delineated by Onterra based upon Geographical Information System measurements and thus are not legally binding.



Onterra LLC
 Lake Management Planning
 815 Prosper Road
 De Pere, WI 54115
 920.338.8860
 www.onterra-eco.com

Sources:
 Hydro: WDNR
 SNW Zones: Onterra (measured in ArcGIS)
 Map date: March 21, 2013
 Filename: GeorgeOneida_SNW_Zones_DraftMap.mxd



Legend

- Lake George ~443 acres
WDNR Lake Outline
- Public Access - Boat landing
- Public Access - Public Beach
- Motorized Boat Slow-No-Wake Area (100 ft)*
- Personal Watercraft Slow-No-Wake Area (200 ft)*

* 100 and 200 foot measurements from shoreline at ordinary high water mark (OHWM).

Map 8
 Lake George
 Oneida County, Wisconsin
Wisconsin Act 31
Slow-No-Wake Zones