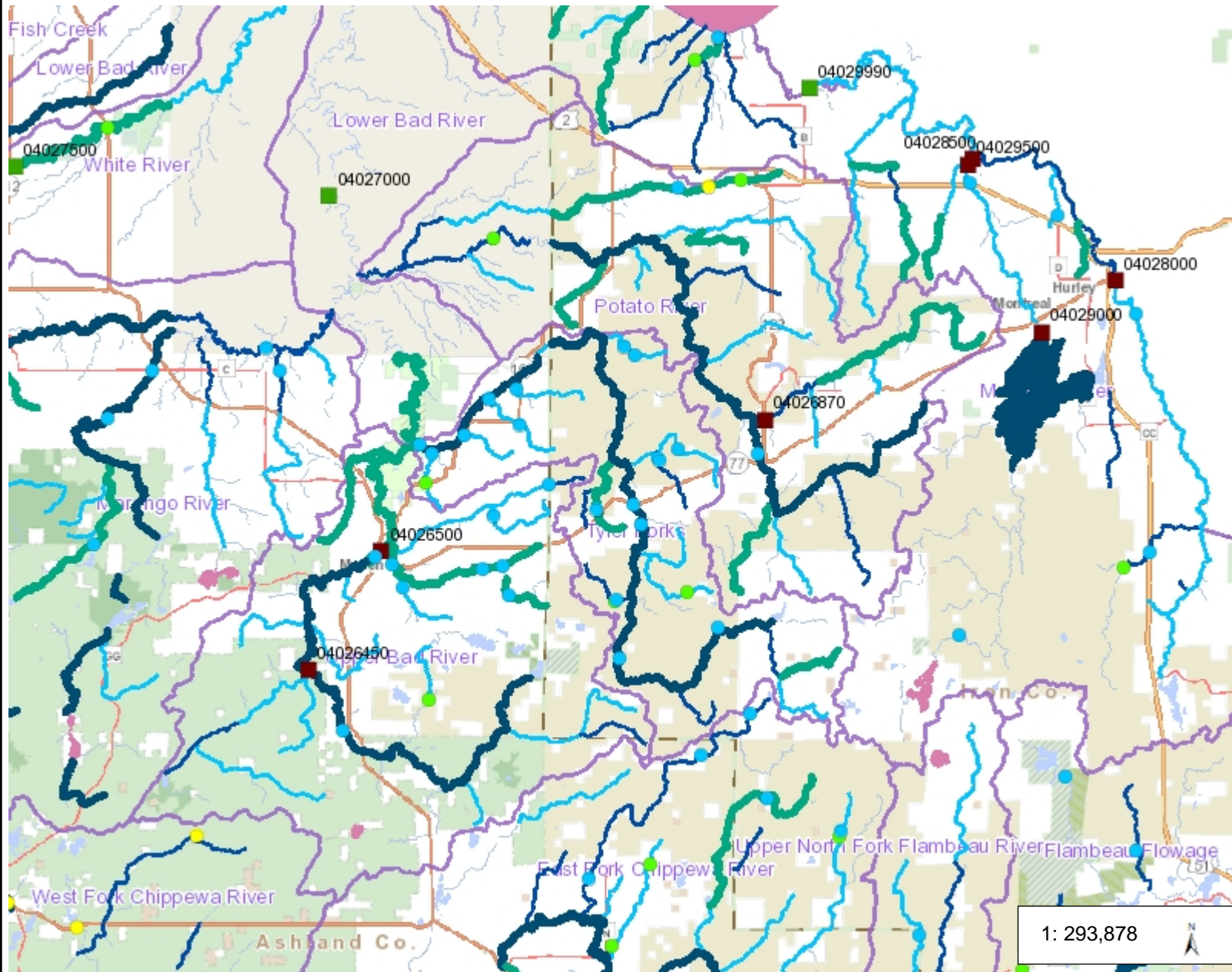




# Tyler Forks Project Area - Water Designations



## Legend

### Macroinvertebrate IBI 10-Yr St

- Poor
- Fair
- Good
- Excellent

### USGS Gage Stations

- Active
- Inactive

### Outstanding and Exceptional S

- Exceptional
- Outstanding

### Locational Information (line)

- COMPLETE
- CONFLICT

### Outstanding and Exceptional L

- Exceptional
- Outstanding

### Locational Information (area)

- COMPLETE
- CONFLICT

### Trout Stream Lines

- Class 1
- Class 2
- Class 3

### Trout Spring Ponds

- Class 1
- Class 2
- Class 3

1: 293,878

## Notes

MBI locations, O/ERW, Trout Waters

9.3 0 4.64 9.3 Miles

NAD\_1983\_HARN\_Wisconsin\_TM  
© Latitude Geographics Group Ltd.

DISCLAIMER: The information shown on these maps has been obtained from various sources, and are of varying age, reliability and resolution. These maps are not intended to be used for navigation, nor are these maps an authoritative source of information about legal land ownership or public access. No warranty, expressed or implied, is made regarding accuracy, applicability for a particular use, completeness, or legality of the information depicted on this map. For more information, see the DNR Legal Notices web page: <http://dnr.wi.gov/org/legal/>