

WISCONSIN'S DRAFT 2014 IMPAIRED WATERS LIST

Public Informational Webinar

February 12, 2014



INTRODUCTION

- Water quality standards are the foundation
- Impaired waters don't meet water quality standards
- States are required to develop list of impaired waters
- Total Maximum Daily Loads (TMDLs), or cleanup plans, are developed for impaired waters
- Restored waterbodies are removed from the list

LISTING PROCESS

1. Preparation of listing methodology
2. Compilation of readily available data
3. Assessment of available data
4. Public notice of draft list
5. Send finalized list to EPA for approval

[Link to Fact Sheet](#)



UPDATED ON EVEN-NUMBERED YEARS

- The 2010 impaired waters list is the most current, EPA-approved list.
 - http://dnr.wi.gov/topic/impairedwaters/2010IR_IWList.html
- The final draft 2012 list was submitted to EPA for approval in August 2013.
 - http://dnr.wi.gov/topic/impairedwaters/2012IR_IWLIST.html
- The 2014 list is the current update

HOW IS THE LIST USED?

- Management tool for tracking water quality status
 - Cleanup plans are tracked
 - Delisted waterbodies are often reported as success stories
- DNR **does not** use the list as a measure of water quality trends
 - Changes can be driven by updated water quality standards, assessment methods and monitoring strategies



WATER QUALITY TRENDS

- Trends have been both positive and negative over the last 20 years at long-term river monitoring stations
 - Phosphorus, ammonia and suspended solids concentrations have **decreased**
 - Nitrate and chloride concentrations have **increased**



DESIGNATED USES AND CRITERIA

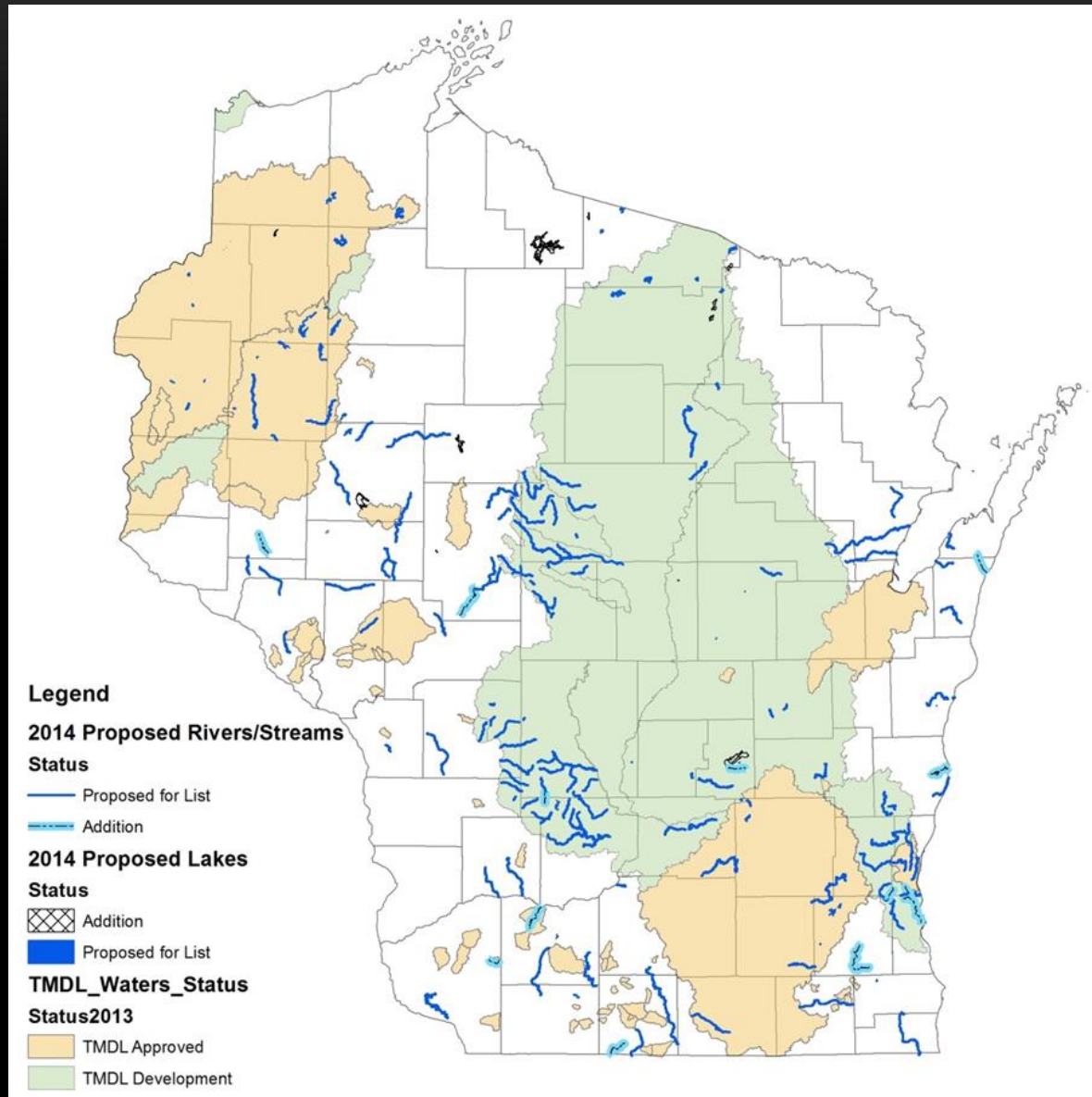
- **Fish and Aquatic Life**
 - Fish, invertebrates and algal data
 - Phosphorus, sediment, and stream habitat
 - Aquatic toxicity
- **Public Health and Welfare**
 - Fish consumption
 - Human health criteria
- **Recreational Uses**
 - Beaches - bacteria
 - Inland lakes – algae and phosphorus
- **Wildlife**
 - Aquatic toxicity

NEXT STEPS FOR RESTORING IMPAIRED WATERS

- Identify the cause, where unknown
- Total Maximum Daily Loads (TMDLs)
- Alternative restoration plans



NEW PHOSPHORUS LISTINGS IN TMDL AREAS



IMPAIRED WATERS CONSEQUENCES

- Point Source Dischargers
 - Dischargers with potential to cause or contribute to an impairment
 - Important considerations:
 - TMDL areas
 - Offsets allowed (e.g. pollutant trading)

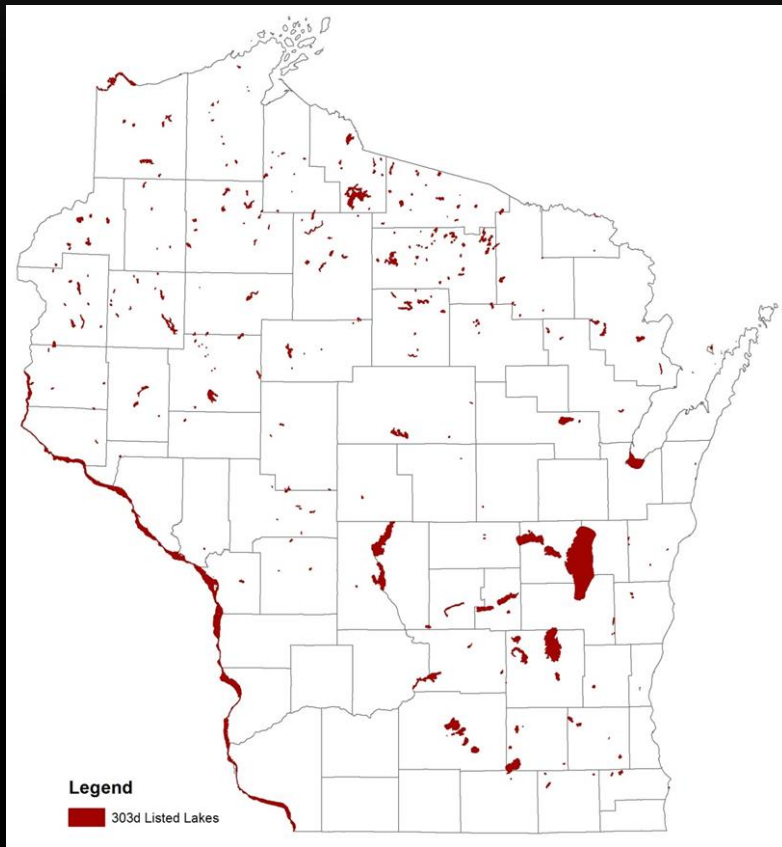
IMPAIRED WATERS BENEFITS

- Provides impetus for restoration work
- Funding Incentives
 - USDA's Environmental Quality Incentives Program (EQIP)
 - Targeted Runoff Management (TRM) grants
 - EPA Section 319 Grant

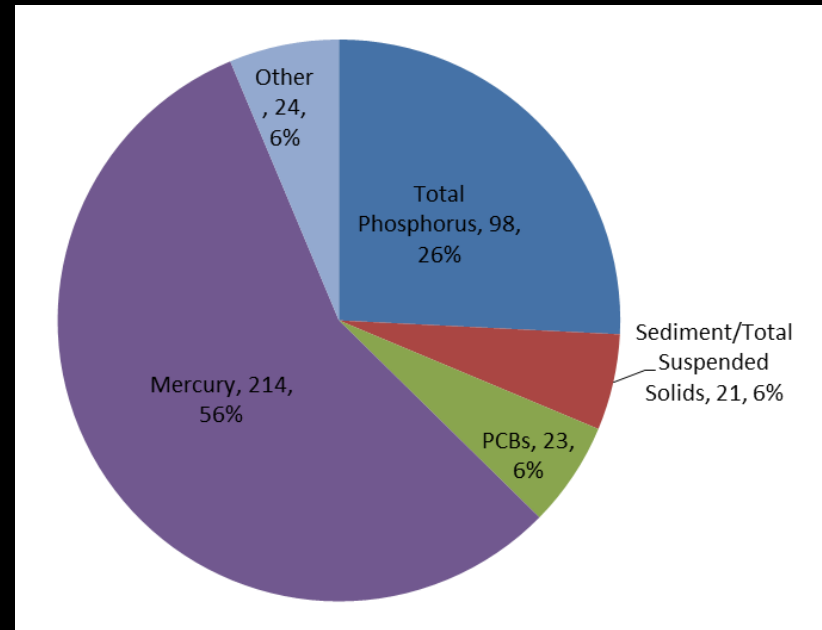
PROPOSED 2014 LISTING UPDATES

- The comprehensive draft list has 856 waterbody listings
- 192 waterbodies are newly proposed for the list
 - A majority of new listings (137) based on phosphorus data
 - Most others based on biological data
- Thirteen waterbodies are proposed to be removed from the list

LAKES AND IMPOUNDMENTS LISTINGS TO DATE

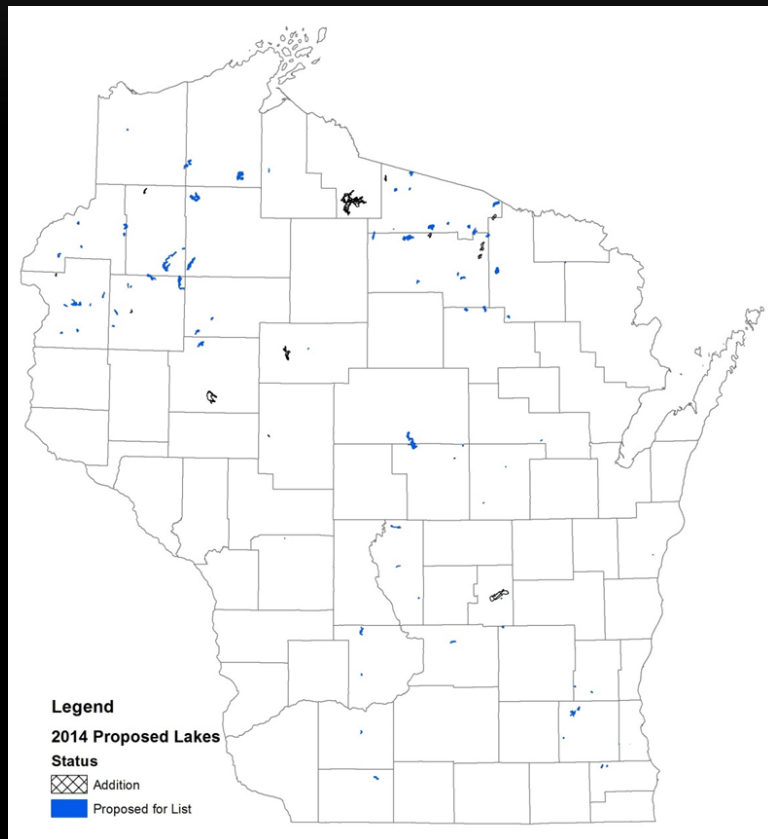


312 Listed Lakes and Impoundments

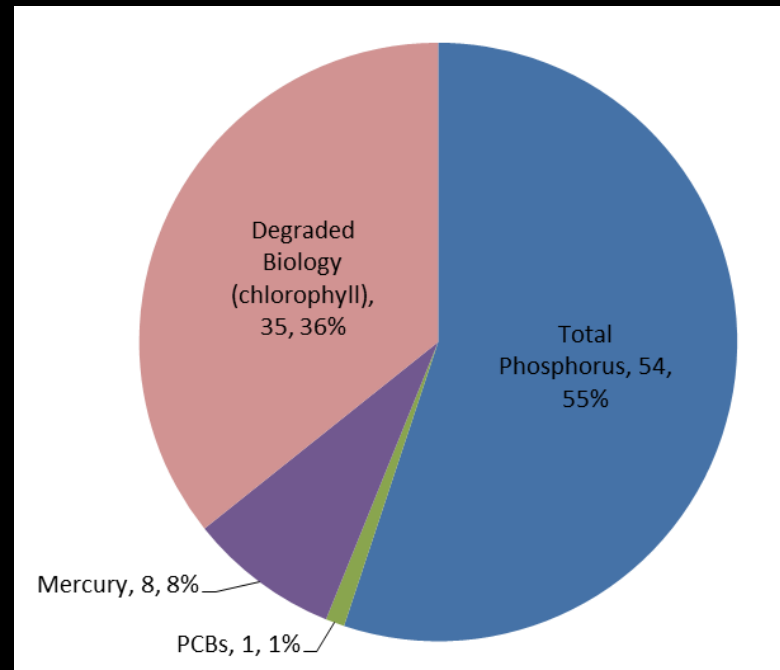


LAKES AND IMPOUNDMENTS

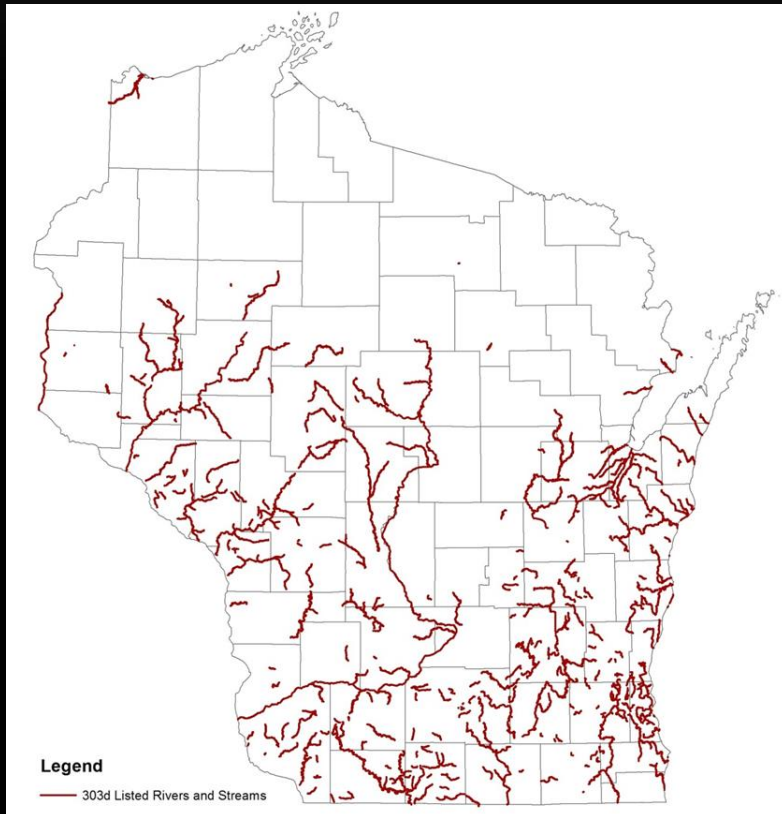
NEW 2014 PROPOSED LISTINGS



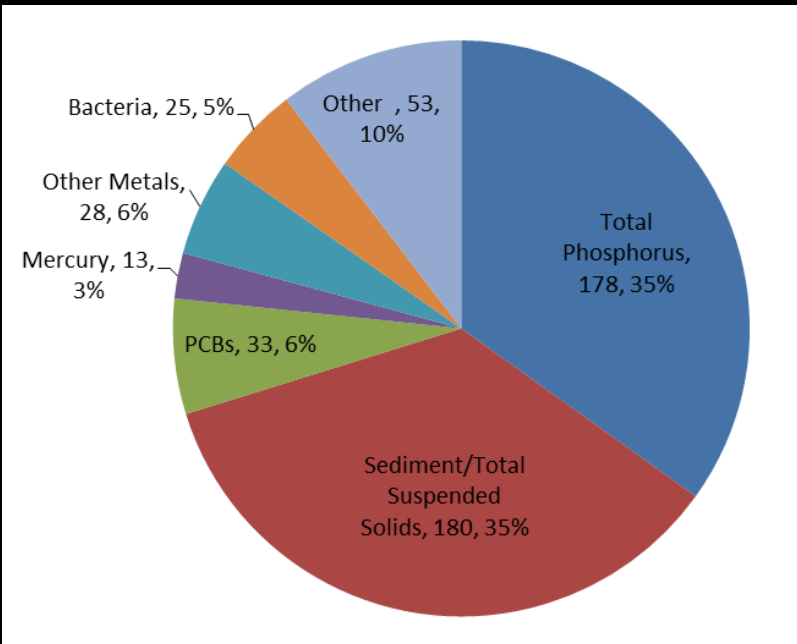
78 New Lakes and Impoundments



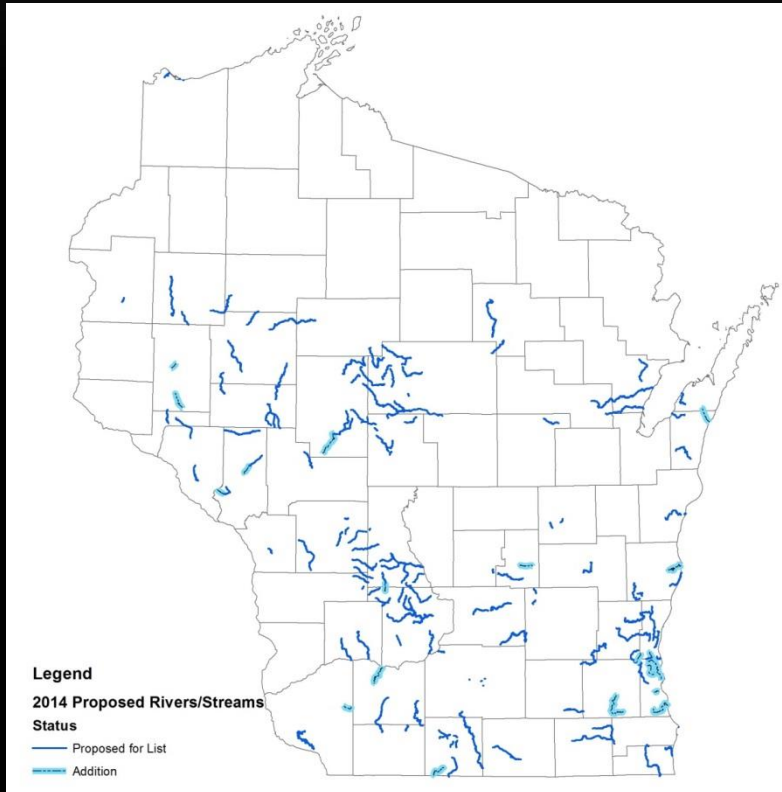
RIVERS AND STREAMS LISTINGS TO DATE



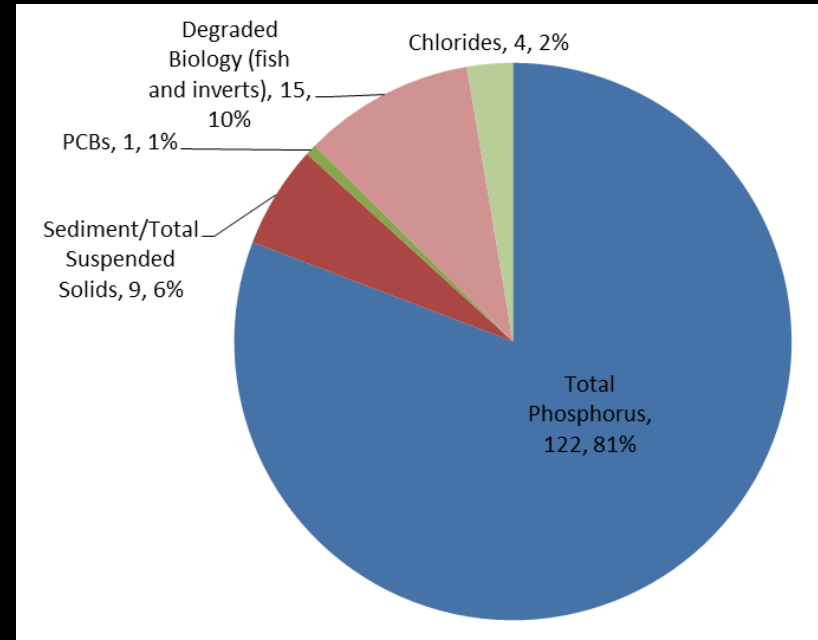
342 Listed Rivers and Streams



RIVERS AND STREAMS NEW 2014 PROPOSED LISTINGS



130 New Rivers and Streams



PUBLIC COMMENT PERIOD

- A 30-day comment period
 - Ends March 6, 2014
- The draft list was announced via the following communications:
 - Press release from Central Office
 - Posting on DNR's website
 - GovDelivery message



RESOURCES ON OUR WEBSITE

- [Comment period](#)
- [Press Release](#)
- **Fact Sheets:**
 - [Listing Process](#)
 - [2014 Listing Updates](#)
- **Wisconsin's Consolidated Assessment and Listing Methods (WisCALM)**
 - [2014 Version](#)

Wisconsin DNR
Bureau of Water Quality

2014 Impaired Waters List Updates

A comment period is being held from January 30 to March 1, 2014 for changes proposed for the draft 2014 Impaired Waters List.

The comprehensive draft 2014 list contains 856 waterbodies, of which 246 are newly added in 2014.

A majority of the new listings are waterbodies exceeding the total phosphorus criteria (see Figure 1).

A significant number of new waterbody listings are degraded biological condition with unknown causes of impairment.

The remaining new listings are due to poor habitat conditions, concentrations of mercury or PCBs in fish tissue, or elevated levels of bacteria or chlorides.

Figure 1. Summary of new listings by pollutant.

New Stream / River Listings

Pollutant	Percentage
Total Phosphorus	60%
Chlorides	4%
Degraded Biology	1%
PCBs	1%
Sediment/Total Suspended Solids	5%

New Lake / Reservoir Listings

Pollutant	Percentage
Total Phosphorus	40%
Degraded Biology	20%
Mercury	8%
PCBs	1%
Sediment/Total Suspended Solids	31%

For more information regarding Wisconsin's Impaired Waters visit: <http://dnr.wi.gov/bsw/impair/waterquality>

To receive future updates on the Impaired Waters List, please subscribe to our mailing list using the GovDelivery service on our website: <http://www.public.govdelivery.com/subscribe/>

GovDelivery

dnr.wi.gov

Revised: January 8, 2014

VIEW THE LISTINGS

- [Link to draft of comprehensive list](#)
 - Tab A. Impaired without TMDL
 - Tab B. Impaired with TMDL
 - Tab C. 2014 Proposed Listings
 - Tab D. 2014 Proposed Delistings
- [The Impaired Waters Search Tool](#)
 - Search DNR's WATERS database for impaired waters listings
- [The Surface Water Data Viewer](#)
 - Search impaired waters listings on a map

QUESTIONS?

Contact Information

Aaron Larson

Water Evaluation Section

Water Quality Bureau

Email: AaronM.Larson@wi.gov

Phone: 608.264.6129

<http://dnr.wi.gov/topic/impairedwaters/>