

Macroinvertebrate IBI Wadeable Streams Graph: Raw results by station/date on a WBIC/Assessment Unit
Based on WisCALM 2012 Guidance - Previous 10 Years of Data

Date Report Ran: 07/12/2013

WBIC: 21300

Official Name: Cedar Creek

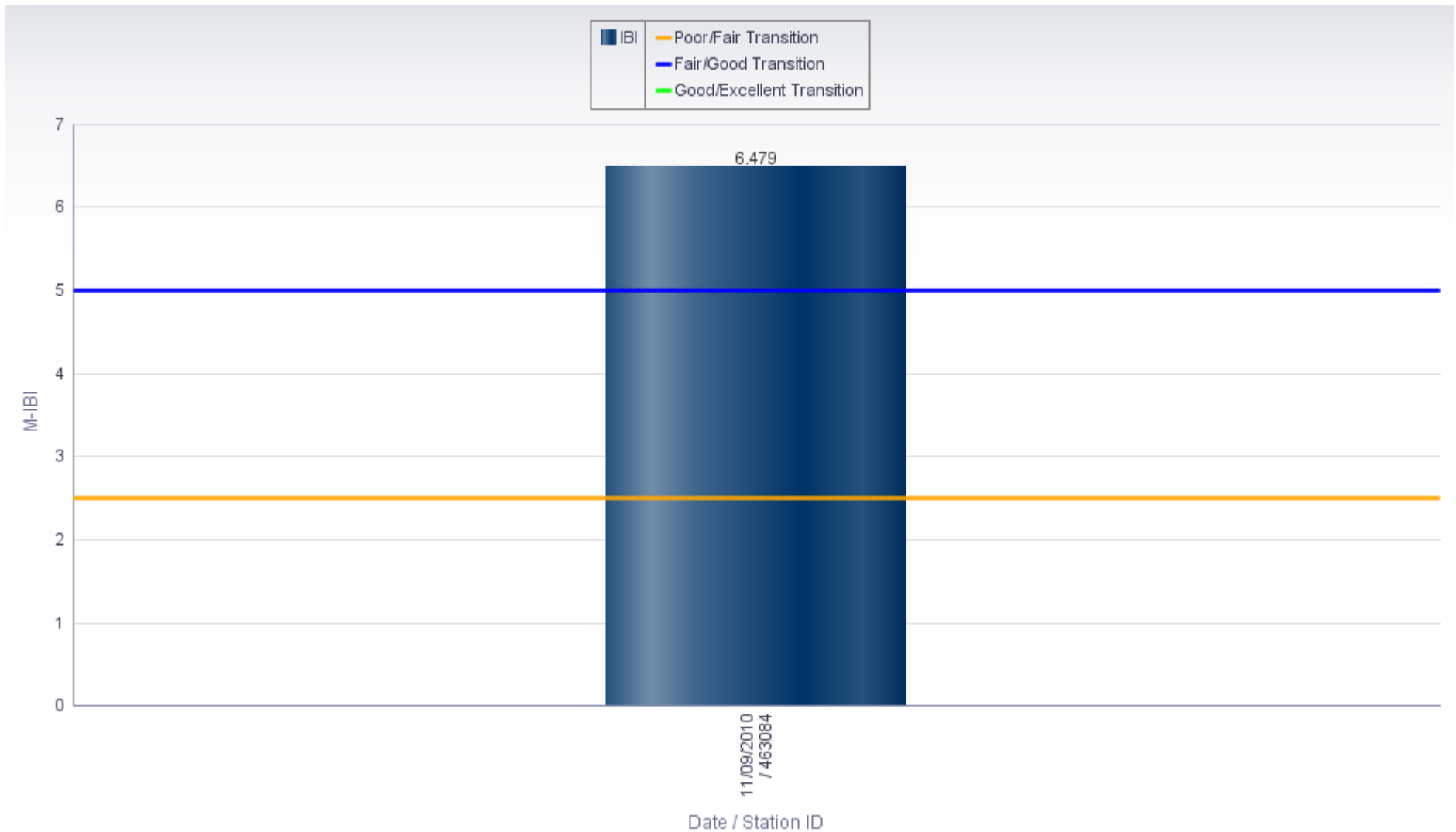
Local Name: Cedar Creek

County: Ozaukee

Watershed: Cedar Creek, Milwaukee River South

Segment #: 1

WATERS ID: 10051



Macroinvertebrate IBI Wadeable Streams Graph: Raw results by station/date on a WBIC/Assessment Unit
Based on WisCALM 2012 Guidance - Previous 10 Years of Data

Date Report Ran: 07/12/2013

WBIC: 44700

Official Name: Fish Creek

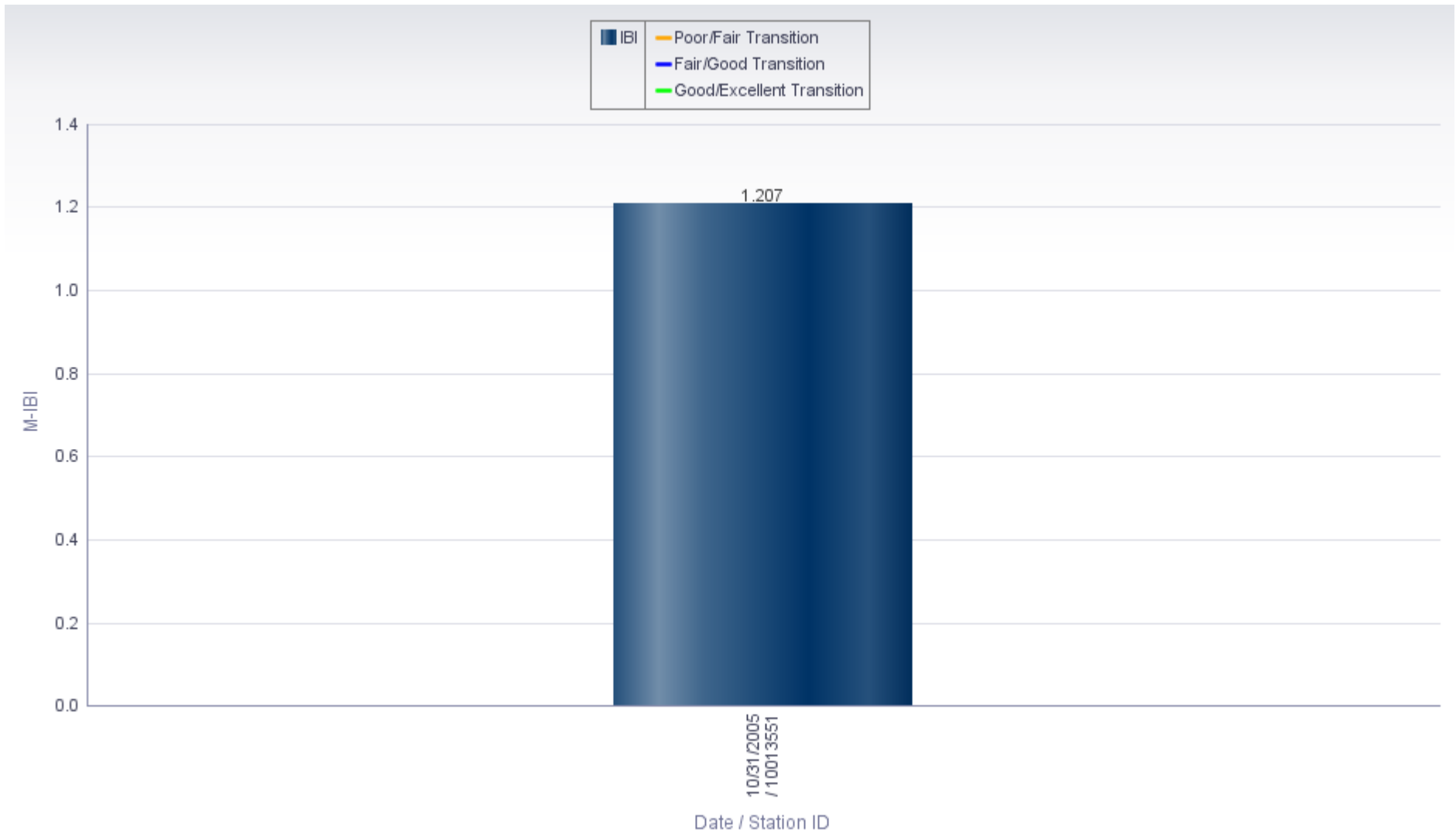
Segment #: 1

Local Name: Fish Creek

WATERS ID: 3924909

County: Ozaukee, Milwaukee

Watershed: Milwaukee River South



Macroinvertebrate IBI Wadeable Streams Graph: Raw results by station/date on a WBIC/Assessment Unit
Based on WisCALM 2012 Guidance - Previous 10 Years of Data

Date Report Ran: 07/12/2013

WBIC: 19600

Official Name: Indian Creek

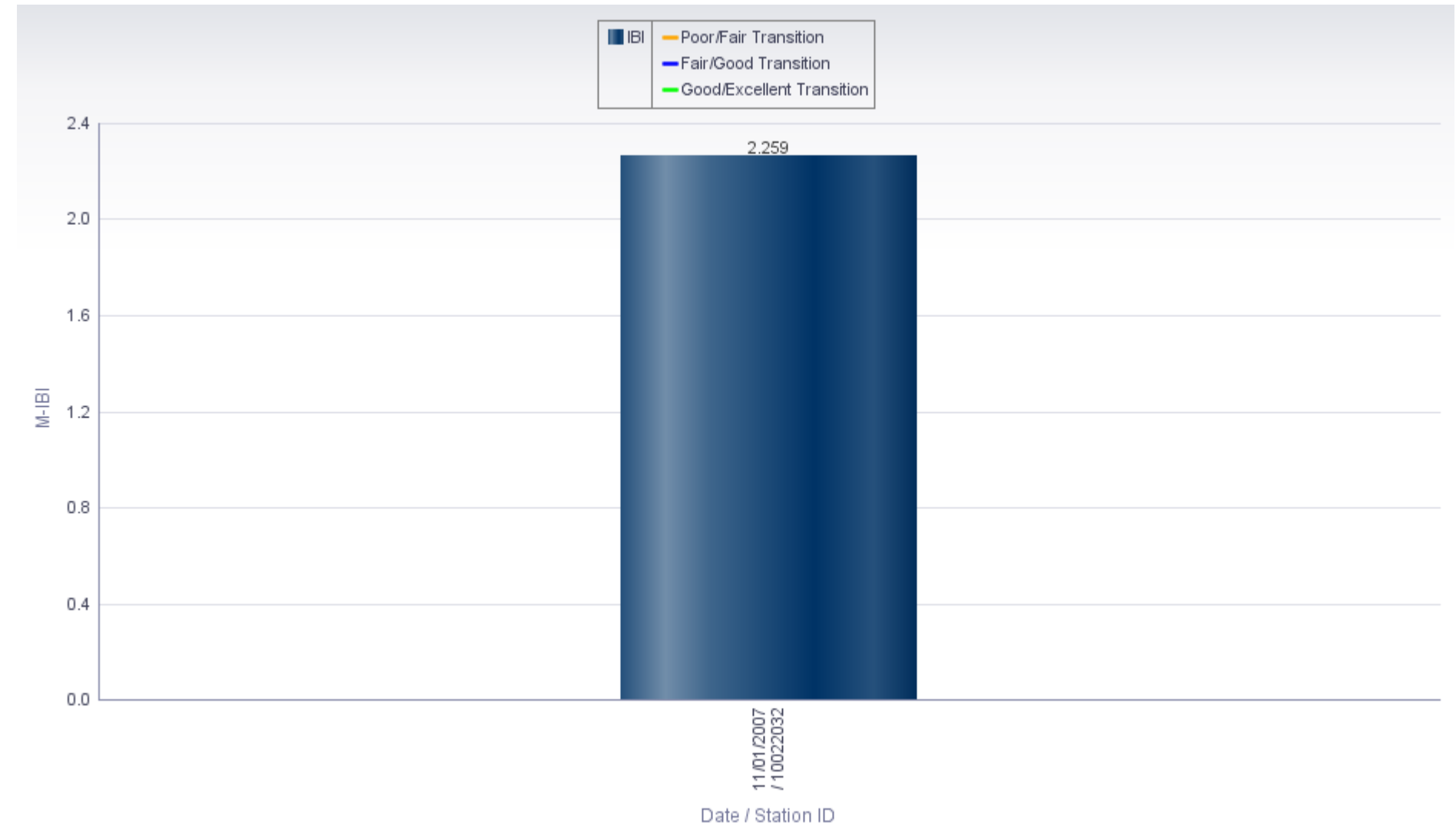
Local Name: Indian Creek

County: Milwaukee

Watershed: Milwaukee River South

Segment #: 1

WATERS ID: 10005



Macroinvertebrate IBI Wadeable Streams Graph: Raw results by station/date on a WBIC/Assessment Unit
Based on WisCALM 2012 Guidance - Previous 10 Years of Data

Date Report Ran: 07/12/2013

WBIC: 19400

Official Name: Lincoln Creek

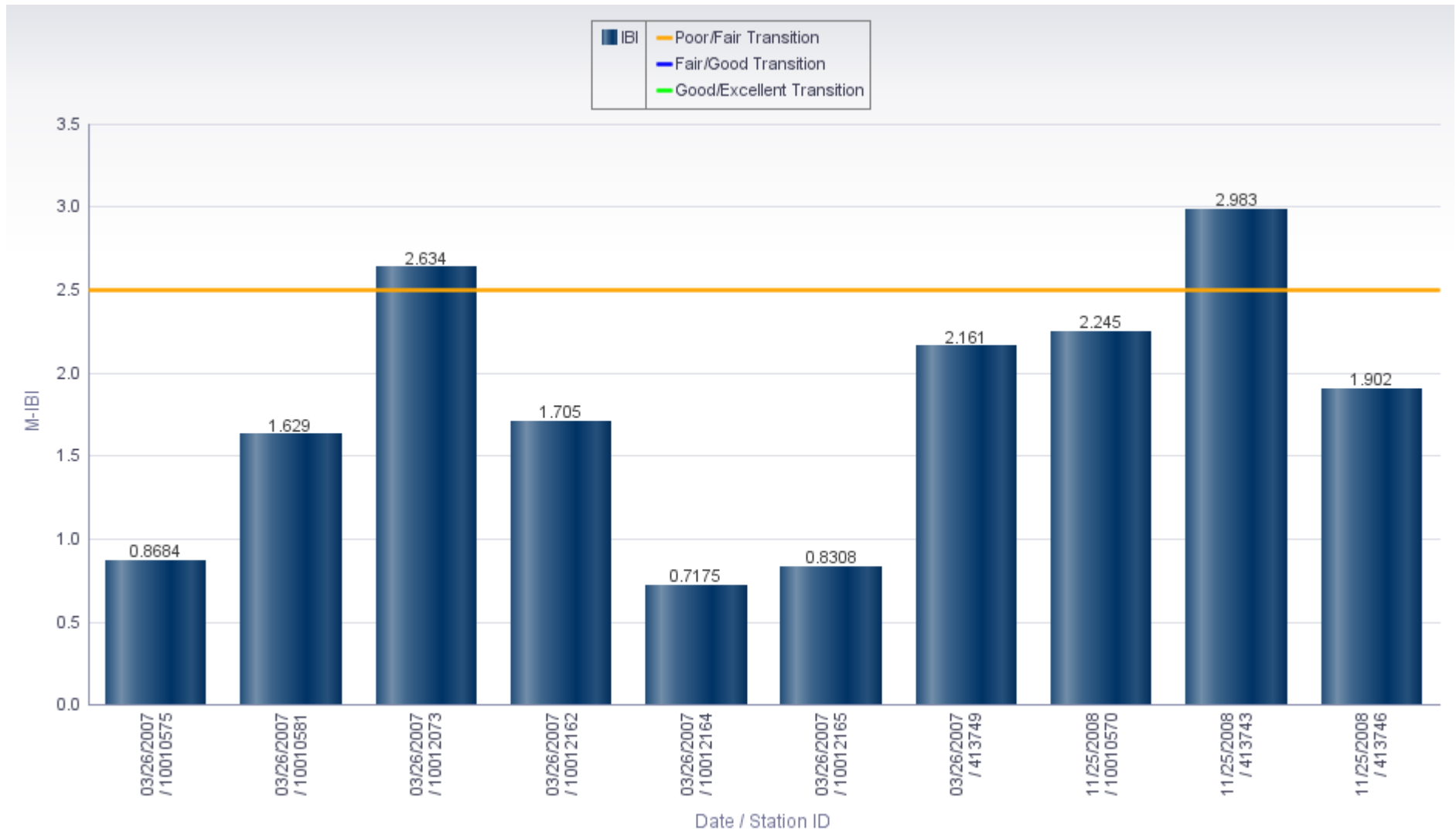
Segment #: 1

Local Name: Lincoln Creek

WATERS ID: 9999

County: Milwaukee

Watershed: Milwaukee River South



Macroinvertebrate IBI Wadeable Streams Graph: Raw results by station/date on a WBIC/Assessment Unit
Based on WisCALM 2012 Guidance - Previous 10 Years of Data

Date Report Ran: 07/12/2013

WBIC: 15000

Official Name: Milwaukee River

Segment #: 2

Local Name: Milwaukee River

WATERS ID: 426381

County: Ozaukee, Milwaukee

Watershed: Milwaukee River South



Macroinvertebrate IBI Wadeable Streams Graph: Raw results by station/date on a WBIC/Assessment Unit
Based on WisCALM 2012 Guidance - Previous 10 Years of Data

Date Report Ran: 07/12/2013

WBIC: 15000

Official Name: Milwaukee River

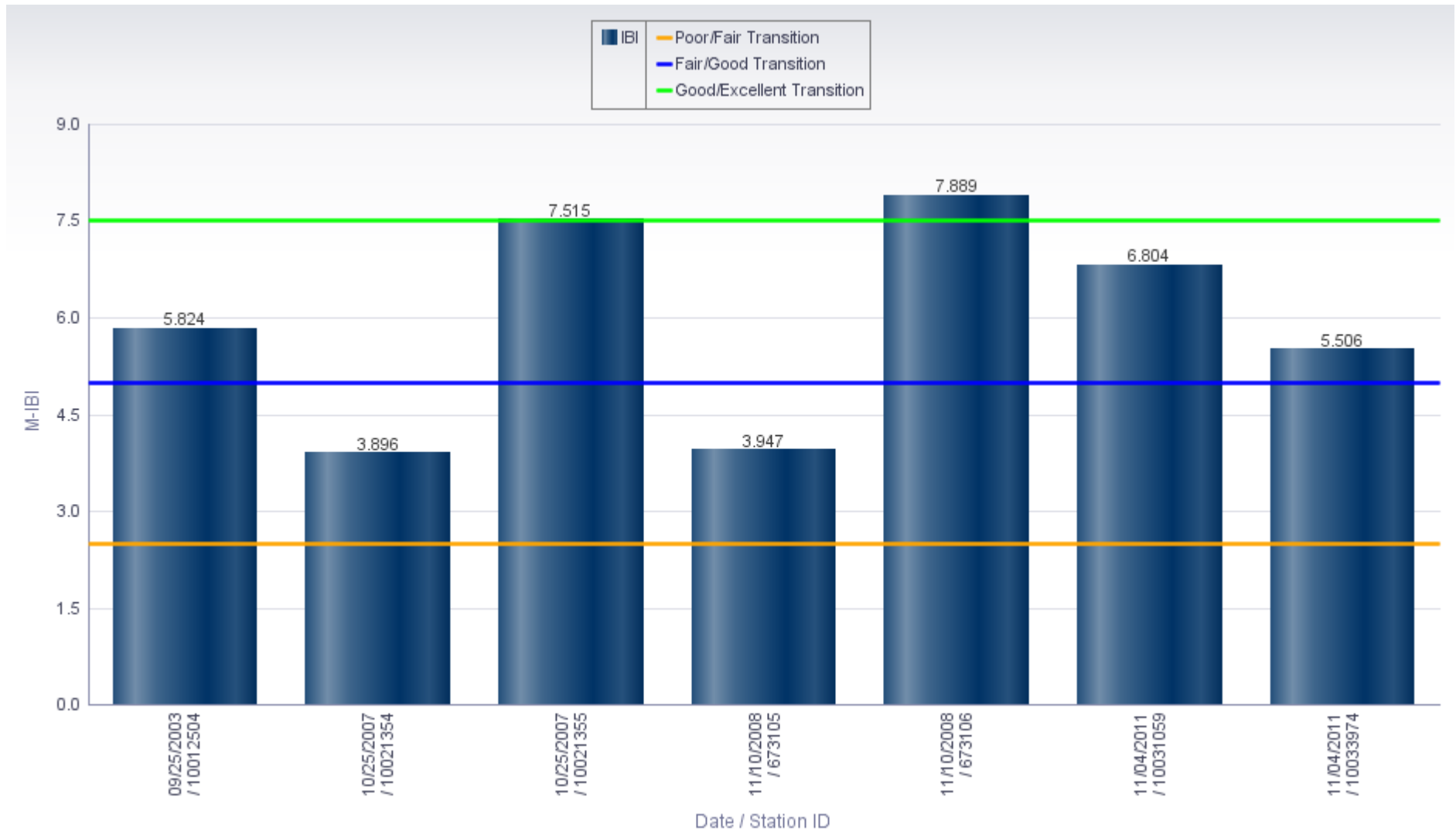
Segment #: 3

Local Name: Milwaukee River

WATERS ID: 481566

County: Ozaukee, Washington

Watershed: North Branch Milwaukee River, East and West Branches Milwaukee River, Milwaukee River South



Macroinvertebrate IBI Wadeable Streams Graph: Raw results by station/date on a WBIC/Assessment Unit
Based on WisCALM 2012 Guidance - Previous 10 Years of Data

Date Report Ran: 07/12/2013

WBIC: 15000

Official Name: Milwaukee River

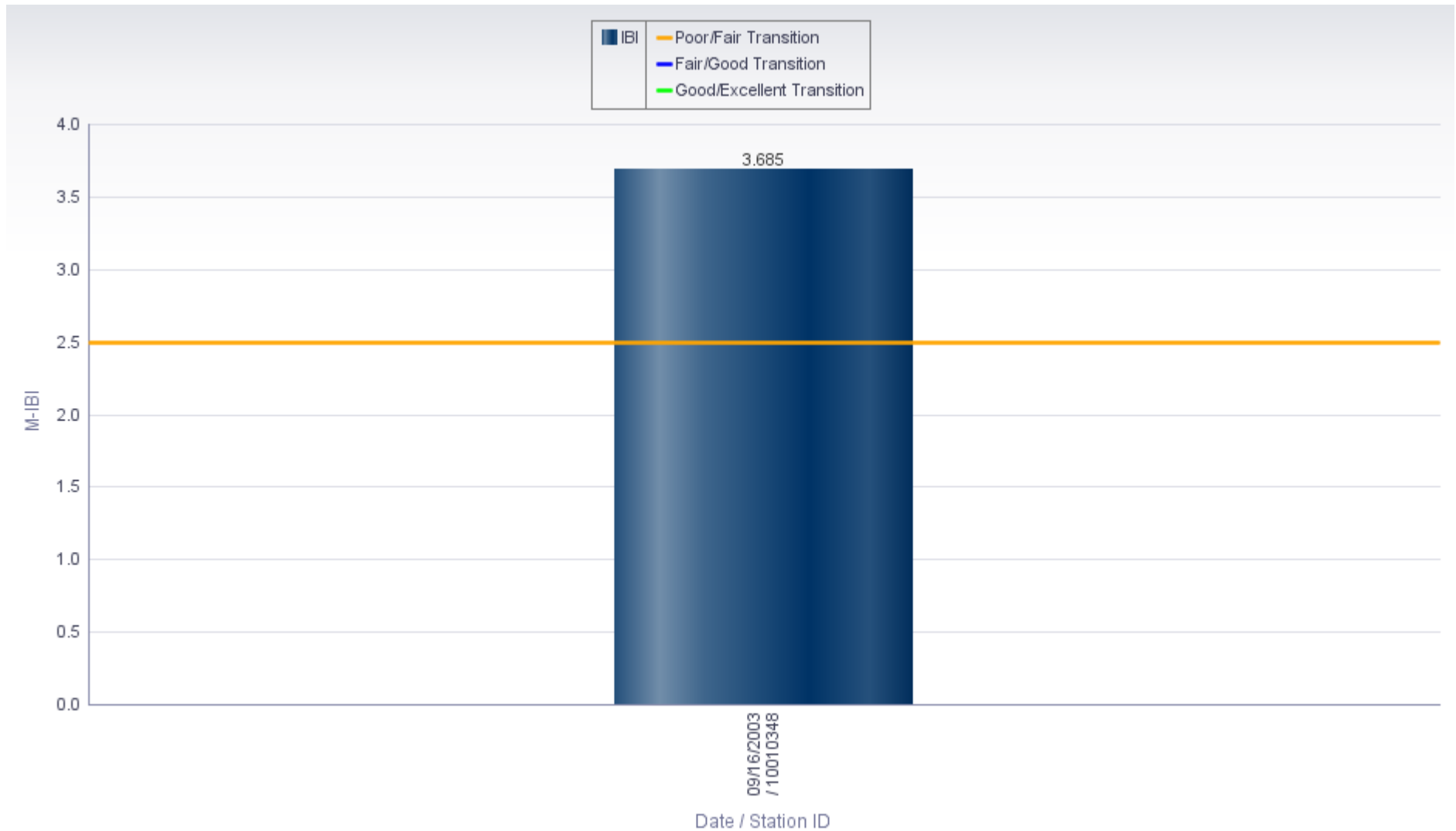
Segment #: 5

Local Name: Milwaukee River

WATERS ID: 1854856

County: Ozaukee

Watershed: Milwaukee River South



Macroinvertebrate IBI Wadeable Streams Graph: Raw results by station/date on a WBIC/Assessment Unit
Based on WisCALM 2012 Guidance - Previous 10 Years of Data

Date Report Ran: 07/12/2013

WBIC: 20500

Official Name: Pigeon Creek

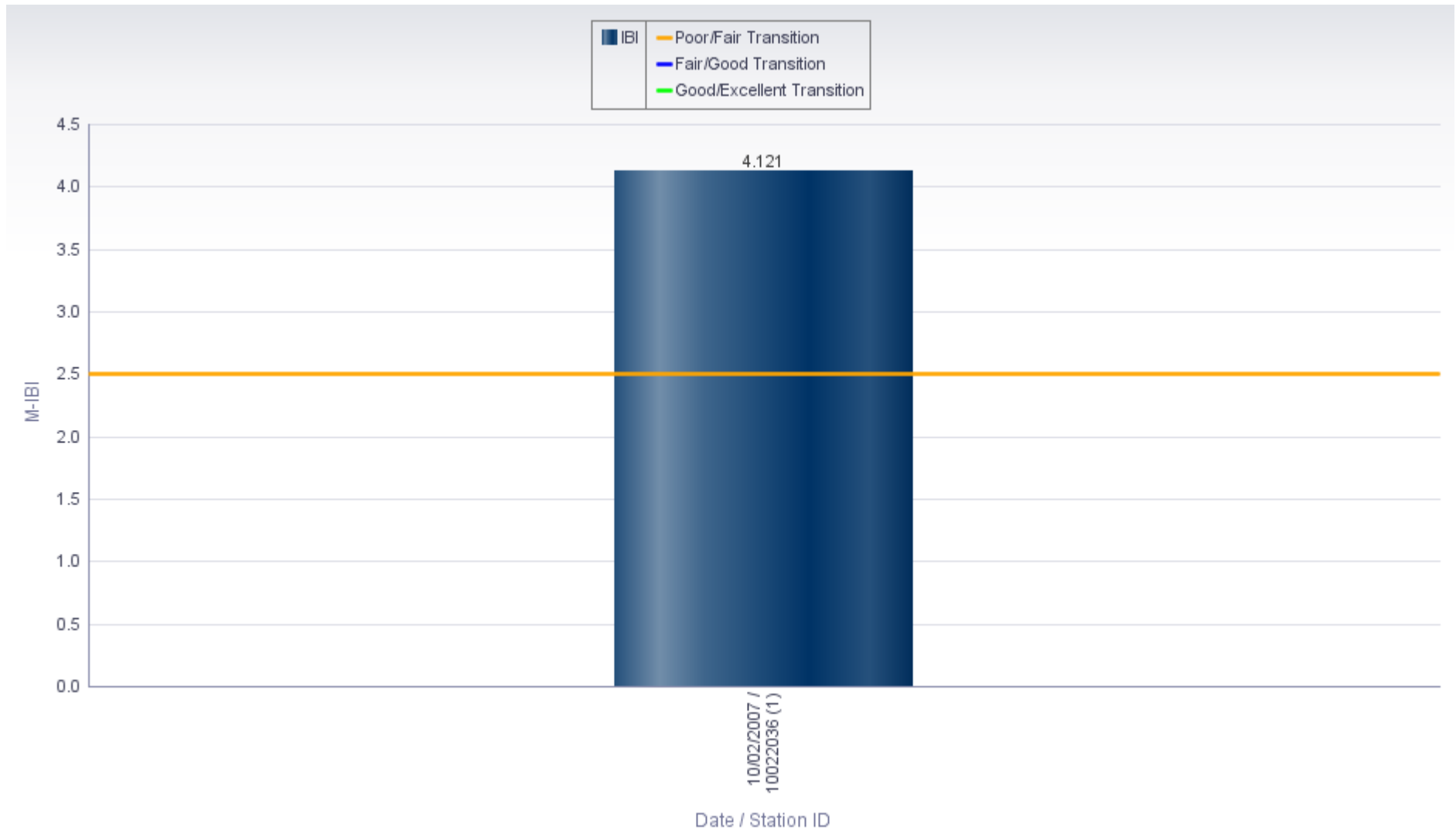
Local Name: Pigeon Creek

County: Ozaukee

Watershed: Menomonee River, Milwaukee River South

Segment #: 1

WATERS ID: 10011



Macroinvertebrate IBI Wadeable Streams Graph: Raw results by station/date on a WBIC/Assessment Unit
Based on WisCALM 2012 Guidance - Previous 10 Years of Data

Date Report Ran: 07/12/2013

WBIC: 20500

Official Name: Pigeon Creek

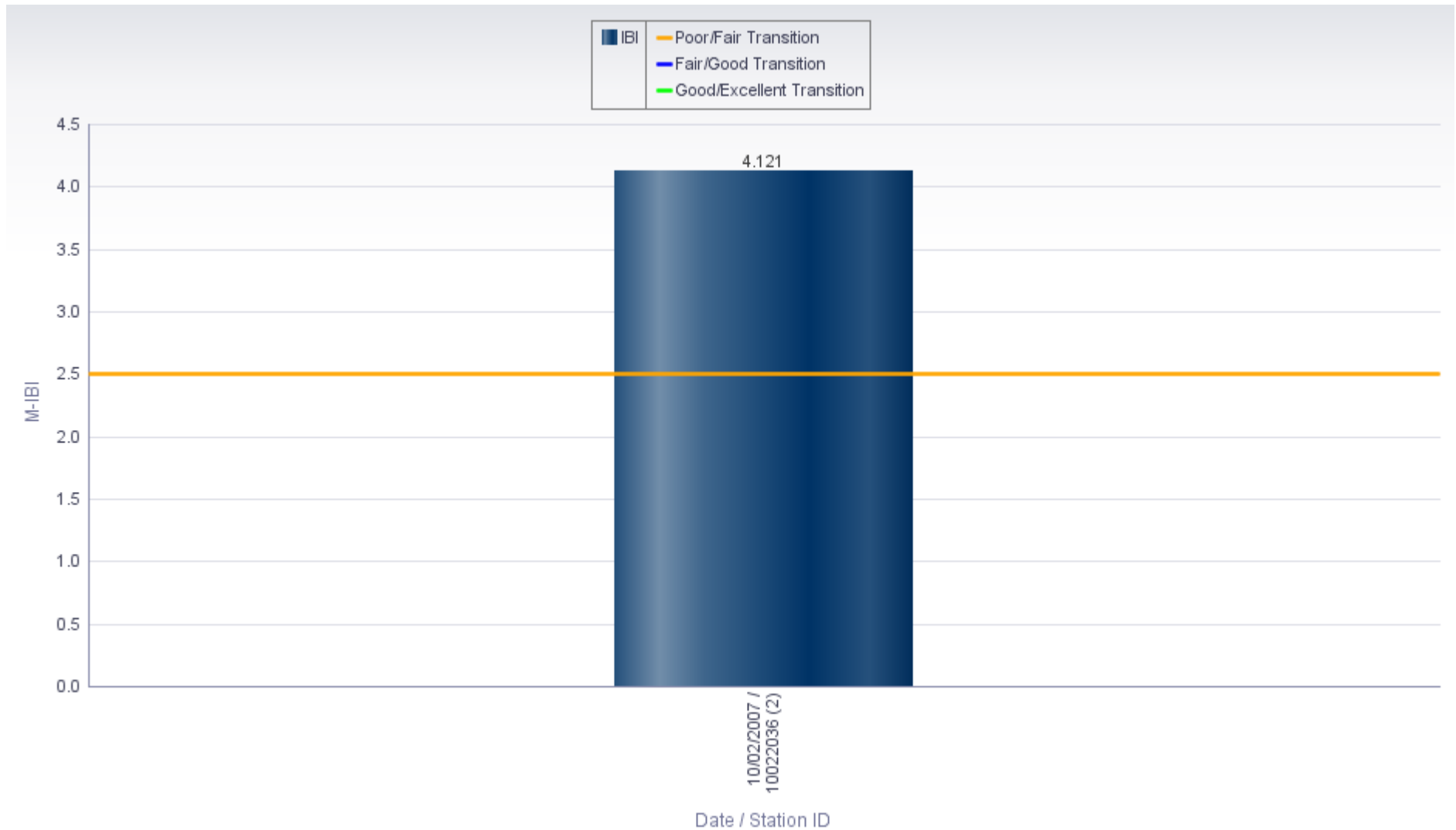
Segment #: 2

Local Name: Unnamed

WATERS ID: 3988556

County: Ozaukee

Watershed: Milwaukee River South



Macroinvertebrate IBI Wadeable Streams Graph: Raw results by station/date on a WBIC/Assessment Unit
Based on WisCALM 2012 Guidance - Previous 10 Years of Data

Date Report Ran: 07/12/2013

WBIC: 5031399

Official Name: Unnamed

Segment #: 1

Local Name: Mole Creek

WATERS ID: 3993907

County: Ozaukee

Watershed: Milwaukee River South

